

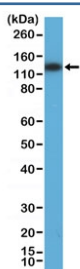
## MSH3 Antibody [clone RM405] (R20421)

Catalog No.	Formulation	Size
R20421-0.1ML	Antibody in PBS with 50% glycerol, 1% BSA and 0.09% sodium azide	100 ul

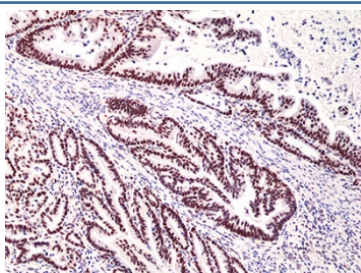
Recombinant **RABBIT MONOCLONAL**

[Bulk quote request](#)

Availability	1-3 business days
Species Reactivity	Human
Format	Purified
Clonality	Recombinant Rabbit Monoclonal
Isotype	Rabbit IgG
Clone Name	RM405
Purity	Protein A purified from animal origin-free supernatant
UniProt	P20585
Localization	Nuclear
Applications	Immunohistochemistry (FFPE) : 1:100-1:200 Western Blot : 1:400-1:800
Limitations	This recombinant MSH3 antibody is available for research use only.



Western blot testing of human HEK293 cell lysate with recombinant MSH3 antibody at 1:800 dilution. Predicted molecular weight ~127 kDa.



IHC staining of FFPE human colon cancer tissue with recombinant MSH3 antibody at 1:200.

## Description

This antibody reacts to human to MSH3 / DNA mismatch repair protein Msh3.

## Application Notes

The stated application concentrations are suggested starting points. Titration of the recombinant MSH3 antibody may be required due to differences in protocols and secondary/substrate sensitivity.

## Immunogen

A peptide corresponding to residues near the N-terminus of human MSH3 was used as the immunogen for the recombinant MSH3 antibody.

## Storage

Store the recombinant MSH3 antibody at -20oC.