

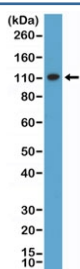
MSH2 Antibody [clone RM375] (R20394)

Catalog No.	Formulation	Size
R20394-0.1ML	Antibody in PBS with 50% glycerol, 1% BSA and 0.09% sodium azide	100 ul

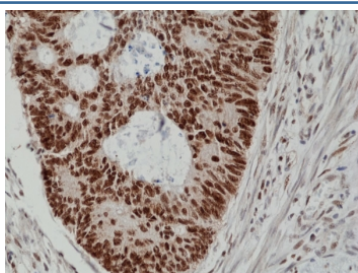
Recombinant **RABBIT MONOCLONAL**

[Bulk quote request](#)

Availability	1-3 business days
Species Reactivity	Human
Format	Purified
Clonality	Recombinant Rabbit Monoclonal
Isotype	Rabbit IgG
Clone Name	RM375
Purity	Protein A purified from animal origin-free supernatant
UniProt	P43246
Localization	Nuclear
Applications	Immunohistochemistry (FFPE) : 1:200-1:1000 Western Blot : 1:400-1:2000
Limitations	This recombinant MSH2 antibody is available for research use only.



Western blot testing of human HeLa cell lysate with recombinant MSH2 antibody at 1:1000 dilution. Expected molecular weight ~105 kDa.



IHC staining of FFPE human colon cancer tissue with recombinant MSH2 antibody at 1:200.

Description

This antibody reacts to human DNA mismatch repair protein Msh2.

Application Notes

The stated application concentrations are suggested starting points. Titration of the recombinant MSH2 antibody may be required due to differences in protocols and secondary/substrate sensitivity.

Immunogen

A mammalian cell expressed recombinant protein fragment within 500 amino acids of the N-terminus of human Msh2 was used as the immunogen for the recombinant MSH2 antibody.

Storage

Store the recombinant MSH2 antibody at -20oC.