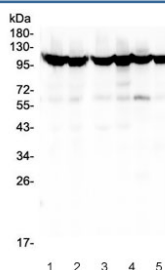


MSH2 Antibody (R31697)

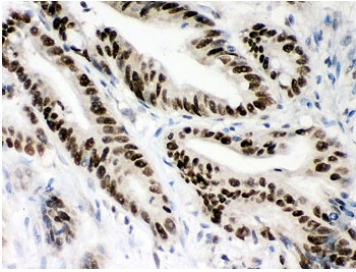
Catalog No.	Formulation	Size
R31697	0.5mg/ml if reconstituted with 0.2ml sterile DI water	100 ug

Bulk quote request

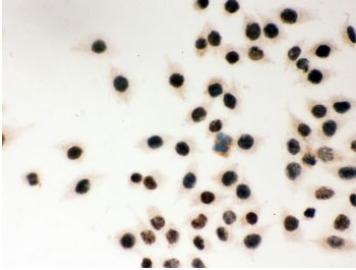
Availability	1-3 business days
Species Reactivity	Human, Mouse, Rat
Format	Antigen affinity purified
Clonality	Polyclonal (rabbit origin)
Isotype	Rabbit IgG
Purity	Antigen affinity
Buffer	Lyophilized from 1X PBS with 2.5% BSA and 0.025% sodium azide
Gene ID	4436
Localization	Nuclear
Applications	Western Blot : 0.5-1ug/ml Immunohistochemistry (FFPE) : 0.5-1ug/ml Immunocytochemistry : 0.5-1ug/ml Immunofluorescence : 2-4ug/ml Flow Cytometry : 1-3ug/million cells
Limitations	This MSH2 antibody is available for research use only.



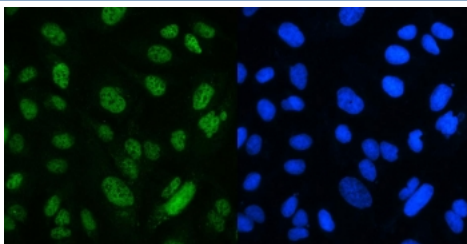
Western blot testing of human 1) HEK293, 2) HEK293 (different lot), 3) HeLa, 4) COLO-320, 5) T-47D and 6) A549 cell lysate with MSH2 antibody. Expected molecular weight: ~105 kDa.



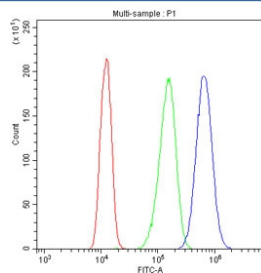
IHC-P: MSH2 antibody testing of human intestine cancer tissue. HIER: steamed with pH6 citrate buffer.



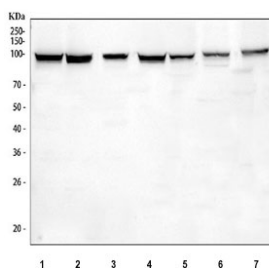
ICC testing of MSH2 antibody and SMMC-7721 cells



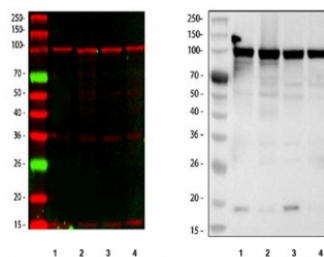
Immunofluorescent staining of FFPE human U-2 OS cells with MSH2 antibody (green) and DAPI nuclear stain (blue). HIER: boil tissue sections in pH6, 10mM citrate buffer, for 20 min and allow to cool before testing.



Flow cytometry testing of human A431 cells with MSH2 antibody at 1ug/million cells (blocked with goat sera); Red=cells alone, Green=isotype control, Blue= MSH2 antibody.



Western blot testing of 1) human K562, 2) human SH-SY5Y, 3) human HEL, 4) human 293T, 5) human A549, 6) rat PC-12 and 7) mouse Neuro-2a cell lysate with MSH2 antibody. Expected molecular weight: ~105 kDa.



Western blot testing of human 1) K562, 2) SH-SY5Y, 3) 293T and 4) A549 cell lysate with MSH2 antibody (DyLight 647 secondary on left and HRP secondary on right). Expected molecular weight: ~105 kDa.

Description

MutS homolog 2 is a protein that in humans is encoded by the MSH2 gene, which is located on chromosome 2. It is a

tumor suppressor gene and more specifically a caretaker gene that codes for a DNA mismatch repair (MMR) protein, MSH2 forms a heterodimer with MSH6 to make the human MutSa mismatch repair complex. It also dimerizes with MSH3 to form the MutSb DNA repair complex. MSH2 is involved in many different forms of DNA repair, including transcription-coupled repair, homologous recombination, and base excision repair. It has been found that it may also be a coactivator of ESR1-dependent gene expression.

Application Notes

The stated application concentrations are suggested starting amounts. Titration of the MSH2 antibody may be required due to differences in protocols and secondary/substrate sensitivity.

Immunogen

Human partial recombinant protein (AA 337-583) was used as the immunogen for this MSH2 antibody.

Storage

After reconstitution, the MSH2 antibody can be stored for up to one month at 4oC. For long-term, aliquot and store at -20oC. Avoid repeated freezing and thawing.