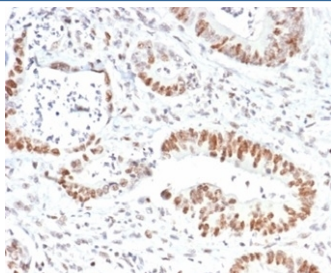


## MSH2 Antibody [clone MSH2/6852] (V9294)

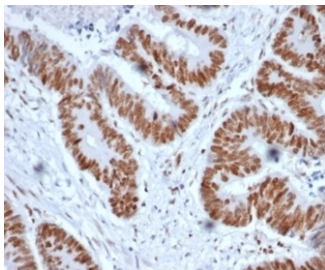
Catalog No.	Formulation	Size
V9294-100UG	0.2 mg/ml in 1X PBS with 0.1 mg/ml BSA (US sourced), 0.05% sodium azide	100 ug
V9294-20UG	0.2 mg/ml in 1X PBS with 0.1 mg/ml BSA (US sourced), 0.05% sodium azide	20 ug
V9294SAF-100UG	1 mg/ml in 1X PBS; BSA free, sodium azide free	100 ug

[Bulk quote request](#)

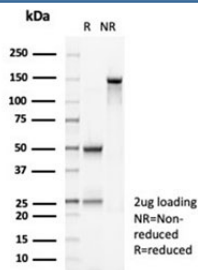
<b>Availability</b>	1-3 business days
<b>Species Reactivity</b>	Human
<b>Format</b>	Purified
<b>Clonality</b>	Monoclonal (mouse origin)
<b>Isotype</b>	Mouse IgG1, kappa
<b>Clone Name</b>	MSH2/6852
<b>Purity</b>	Protein A/G affinity
<b>UniProt</b>	IDP43246
<b>Localization</b>	Nucleus
<b>Applications</b>	Western Blot : 1-2ug/ml Immunohistochemistry (FFPE) : 1-2ug/ml
<b>Limitations</b>	This MSH2 antibody is available for research use only.



IHC staining of FFPE human colon tissue with MSH2 antibody (clone MSH2/6852).  
HIER: boil tissue sections in pH 9 10mM Tris with 1mM EDTA for 20 min and allow to cool before testing.



IHC staining of FFPE human colon tissue with MSH2 antibody (clone MSH2/6852).  
HIER: boil tissue sections in pH 9 10mM Tris with 1mM EDTA for 20 min and allow to cool before testing.



SDS-PAGE analysis of purified, BSA-free MSH2 antibody (clone MSH2/6852) as confirmation of integrity and purity.

## Description

Mutations in DNA mismatch repair genes are associated with hereditary nonpolyposis colorectal cancer (HNPCC). Initially, inherited mutations in the MSH2 and MLH1 homologs of the bacterial DNA mismatch repair genes MutS and MutL were found at high frequency in HNPCC and were shown to be associated with microsatellite instability. The demonstration that 10 to 45% of pancreatic, gastric, breast, ovarian and small cell lung cancers also display microsatellite instability has been interpreted to suggest that DNA mismatch repair is not restricted to HNPCC tumors but is a common feature in tumor initiation or progression.

## Application Notes

Optimal dilution of the MSH2 antibody should be determined by the researcher.

## Immunogen

Recombinant full-length human MSH2 protein was used as the immunogen for the MSH2 antibody.

## Storage

Aliquot the MSH2 antibody and store frozen at -20oC or colder. Avoid repeated freeze-thaw cycles.