

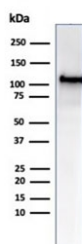
MSH2 Antibody [clone MSH2/6549R] (V9303)

Catalog No.	Formulation	Size
V9303-100UG	0.2 mg/ml in 1X PBS with 0.1 mg/ml BSA (US sourced), 0.05% sodium azide	100 ug
V9303-20UG	0.2 mg/ml in 1X PBS with 0.1 mg/ml BSA (US sourced), 0.05% sodium azide	20 ug
V9303SAF-100UG	1 mg/ml in 1X PBS; BSA free, sodium azide free	100 ug

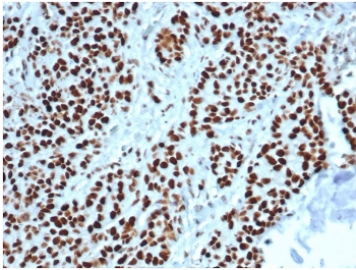
Recombinant **RABBIT MONOCLONAL**

[Bulk quote request](#)

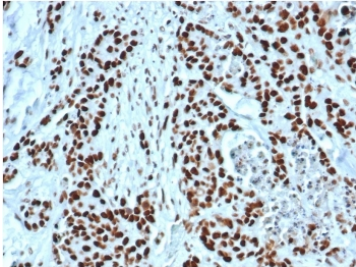
Availability	1-3 business days
Species Reactivity	Human
Format	Purified
Clonality	Recombinant Rabbit Monoclonal
Isotype	Rabbit IgG
Clone Name	MSH2/6549R
Purity	Protein A/G affinity
UniProt	IDP43246
Localization	Nuclear
Applications	Western Blot : 1-2ug/ml Immunohistochemistry (FFPE) : 1-2ug/ml
Limitations	This MSH2 antibody is available for research use only.



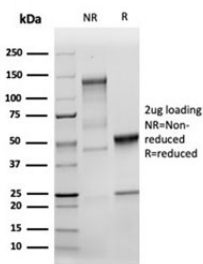
Western blot testing of human HCT-116 cell lysate using MSH2 antibody (clone MSH2/6549R). Expected molecular weight ~105 kDa.



IHC staining of FFPE human colon tissue with MSH2 antibody (clone MSH2/6549R).
HIER: boil tissue sections in pH 9 10mM Tris with 1mM EDTA for 20 min and allow to cool before testing.



IHC staining of FFPE human colon tissue with MSH2 antibody (clone MSH2/6549R).
HIER: boil tissue sections in pH 9 10mM Tris with 1mM EDTA for 20 min and allow to cool before testing.



SDS-PAGE analysis of purified, BSA-free MSH2 antibody (clone MSH2/6549R) as confirmation of integrity and purity.

Description

Mutations in DNA mismatch repair genes are associated with hereditary nonpolyposis colorectal cancer (HNPCC). Initially, inherited mutations in the MSH2 and MLH1 homologs of the bacterial DNA mismatch repair genes MutS and MutL were found at high frequency in HNPCC and were shown to be associated with microsatellite instability. The demonstration that 10 to 45% of pancreatic, gastric, breast, ovarian and small cell lung cancers also display microsatellite instability has been interpreted to suggest that DNA mismatch repair is not restricted to HNPCC tumors but is a common feature in tumor initiation or progression.

Application Notes

Optimal dilution of the MSH2 antibody should be determined by the researcher.

Immunogen

Recombinant full-length human MSH2 protein was used as the immunogen for the MSH2 antibody.

Storage

Aliquot the MSH2 antibody and store frozen at -20oC or colder. Avoid repeated freeze-thaw cycles.

