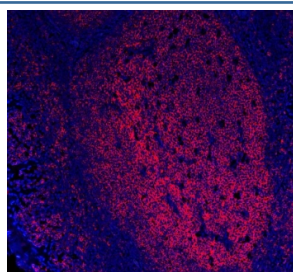


## MS4A1 Antibody / CD20 [clone 4I11] (RQ6739)

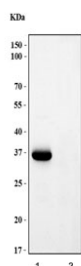
Catalog No.	Formulation	Size
RQ6739	0.5mg/ml if reconstituted with 0.2ml sterile DI water	100 ug

**Bulk quote request**

<b>Availability</b>	1-3 business days
<b>Species Reactivity</b>	Human
<b>Format</b>	Purified
<b>Clonality</b>	Monoclonal (mouse origin)
<b>Isotype</b>	Mouse IgG2a
<b>Clone Name</b>	4I11
<b>Purity</b>	Affinity purified
<b>Buffer</b>	Lyophilized from 1X PBS with 2% Trehalose
<b>UniProt</b>	P11836
<b>Localization</b>	Predominantly cell surface with some cytoplasmic
<b>Applications</b>	Western Blot : 1-2ug/ml Immunofluorescence (FFPE) : 5ug/ml
<b>Limitations</b>	This MS4A1 antibody is available for research use only.



Immunofluorescent staining of FFPE human tonsil tissue with MS4A1 antibody (red) and DAPI nuclear stain (blue). HIER: steam section in pH6 citrate buffer for 20 min.



Western blot testing of human 1) Raji and 2) Jurkat cell lysate with MS4A1 antibody. Predicted molecular weight ~33 kDa.

## Description

CD20, also known as MS4A1, is an activated-glycosylated phosphoprotein expressed on the surface of all B-cells beginning at the pro-B phase (CD45R+, CD117+) and progressively increasing in concentration until maturity. It is mapped to 11q12.2. This gene encodes a member of the membrane-spanning 4A gene family. The function of CD20 is to enable optimal B-cell immune response, specifically against T-independent antigens. It is suspected that CD20 acts as a calcium channel in the cell membrane. What's more, this protein may be involved in the regulation of B-cell activation and proliferation.

## Application Notes

Optimal dilution of the MS4A1 antibody should be determined by the researcher.

## Immunogen

Recombinant human protein (amino acids M1-P297) was used as the immunogen for the MS4A1 antibody.

## Storage

After reconstitution, the MS4A1 antibody can be stored for up to one month at 4°C. For long-term, aliquot and store at -20°C. Avoid repeated freezing and thawing.