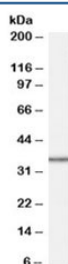


## MRPL3 Antibody (R34938)

Catalog No.	Formulation	Size
R34938-100UG	0.5 mg/ml in 1X TBS, pH7.3, with 0.5% BSA (US sourced) and 0.02% sodium azide	100 ug

[Bulk quote request](#)

Availability	1-3 business days
Species Reactivity	Human
Predicted Reactivity	Cow, Pig
Format	Antigen affinity purified
Clonality	Polyclonal (goat origin)
Isotype	Goat Ig
Purity	Antigen affinity
Gene ID	11222
Applications	Western Blot : 1-3ug/ml ELISA (peptide) LOD : 1:32000
Limitations	This MRPL3 antibody is available for research use only.



Western blot testing of HepG2 cell lysate with MRPL3 antibody at 1ug/ml. Predicted molecular weight: ~38kDa.

## Description

Additional name(s) for this target protein: Mitochondrial ribosomal protein L3, MRL3, RPML3

## Application Notes

Optimal dilution of the MRPL3 antibody should be determined by the researcher.

## Immunogen

Amino acids NVCQPGAPSITFA were used as the immunogen for this MRPL3 antibody.

## Storage

Aliquot and store the MRPL3 antibody at -20oC.