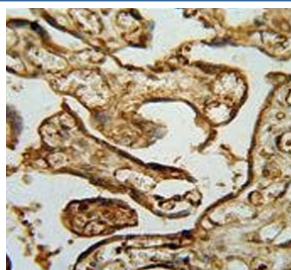


MPP1 Antibody / Membrane protein palmitoylated 1 (F54558)

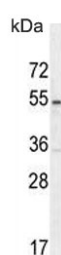
Catalog No.	Formulation	Size
F54558-0.4ML	In 1X PBS, pH 7.4, with 0.09% sodium azide	0.4 ml
F54558-0.08ML	In 1X PBS, pH 7.4, with 0.09% sodium azide	0.08 ml

Bulk quote request

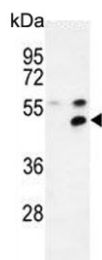
Availability	1-3 business days
Species Reactivity	Human
Format	Purified
Clonality	Polyclonal (rabbit origin)
Isotype	Rabbit Ig
Purity	Antigen affinity purified
UniProt	Q00013
Localization	Cytoplasmic
Applications	Flow Cytometry : 1:25 (1x10 ⁶ cells) Immunohistochemistry (FFPE) : 1:25 Western Blot : 1:500-1:2000
Limitations	This MPP1 antibody is available for research use only.



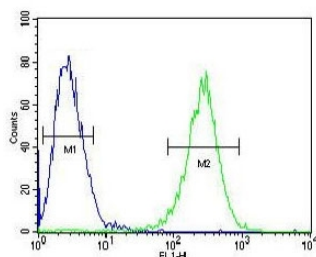
IHC testing of FFPE human placental tissue with MPP1 antibody. HIER: steam section in pH6 citrate buffer for 20 min and allow to cool prior to staining.



Western blot testing of human Jurkat cell lysate with MPP1 antibody. Expected molecular weight 52-55 kDa.



Western blot testing of 1) non-transfected and 2) transfected 293 cell lysate with MPP1 antibody. Expected molecular weight 52-55 kDa.



Flow cytometry testing of human Jurkat cells with MPP1 antibody; Blue=isotype control, Green= MPP1 antibody.

Description

This gene encodes the prototype of the membrane-associated guanylate kinase (MAGUK) family proteins. MAGUKs interact with the cytoskeleton and regulate cell proliferation, signaling pathways, and intercellular junctions. The encoded protein is an extensively palmitoylated membrane phosphoprotein containing a PDZ domain, a Src homology 3 (SH3) motif, and a guanylate kinase domain. This gene product interacts with various cytoskeletal proteins and cell junctional proteins in different tissue and cell types, and may be involved in the regulation of cell shape, hair cell development, neural patterning of the retina, and apico-basal polarity and tumor suppression pathways in non-erythroid cells. Multiple transcript variants encoding different isoforms have been found for this gene.

Application Notes

The stated application concentrations are suggested starting points. Titration of the MPP1 antibody may be required due to differences in protocols and secondary/substrate sensitivity.

Immunogen

A portion of amino acids 301-327 from the human protein was used as the immunogen for the MPP1 antibody.

Storage

Aliquot the MPP1 antibody and store frozen at -20oC or colder. Avoid repeated freeze-thaw cycles.