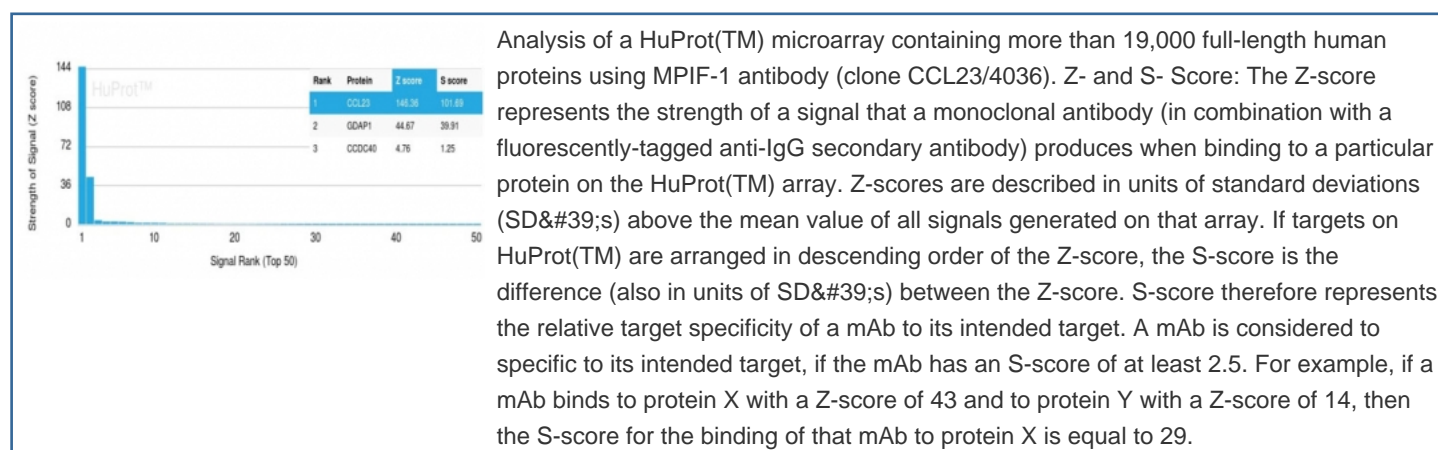


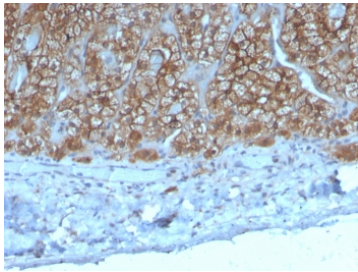
MPIF-1 Antibody / CCL23 / Myeloid Progenitor Inhibitory Factor 1 [clone CCL23/4036] (V4467)

Catalog No.	Formulation	Size
V4467-100UG	0.2 mg/ml in 1X PBS with 0.1 mg/ml BSA (US sourced), 0.05% sodium azide	100 ug
V4467-20UG	0.2 mg/ml in 1X PBS with 0.1 mg/ml BSA (US sourced), 0.05% sodium azide	20 ug
V4467SAF-100UG	1 mg/ml in 1X PBS; BSA free, sodium azide free	100 ug

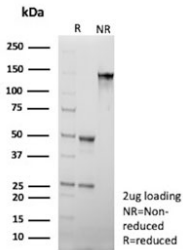
Bulk quote request

Availability	1-3 business days
Species Reactivity	Human
Format	Purified
Clonality	Monoclonal (mouse origin)
Isotype	Mouse IgG2c, kappa
Clone Name	CCL23/4036
Purity	Protein A/G affinity
UniProt	P55773
Localization	Secreted
Applications	Immunohistochemistry (FFPE) : 1-2ug/ml for 30 minutes at RT
Limitations	This MPIF-1 antibody is available for research use only.





IHC staining of FFPE human adrenal gland tissue with MPIF-1 antibody (clone CCL23/4036). HIER: boil tissue sections in pH 9 10mM Tris with 1mM EDTA for 20 min and allow to cool before testing.



SDS-PAGE analysis of purified, BSA-free MPIF-1 antibody (clone CCL23/4036) as confirmation of integrity and purity.

Description

Small inducible cytokine A23 precursor (CCL23), also called CK-b-8 and Myeloid Progenitor Inhibitory Factor 1 (MPIF-1), is a chemokine that binds to the receptor CCR1. It is involved in the immune response and inhibits production of polymorphonuclear leukocytes (PMNs) and monocytes in bone marrow.

Application Notes

Optimal dilution of the MPIF-1 antibody should be determined by the researcher.

Immunogen

A recombinant partial protein sequence (within amino acids 1-120) from the human protein was used as the immunogen for the MPIF-1 antibody.

Storage

Aliquot the MPIF-1 antibody and store frozen at -20oC or colder. Avoid repeated freeze-thaw cycles.