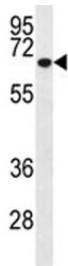


MMP2 Antibody [clone 6E3F8] (F53512)

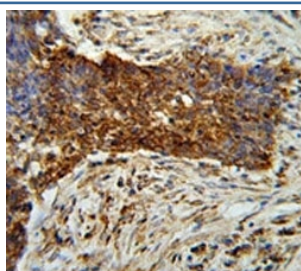
| Catalog No. | Formulation | Size |
|--------------|------------------------------------|--------|
| F53512-0.1ML | In ascites with 0.09% sodium azide | 0.1 ml |

Bulk quote request

| | |
|---------------------------|--|
| Availability | 1-3 business days |
| Species Reactivity | Human |
| Format | Ascites |
| Clonality | Monoclonal (mouse origin) |
| Isotype | Mouse IgG2b, k |
| Clone Name | 6E3F8 |
| Purity | Ascites |
| UniProt | P08253 |
| Applications | Western Blot : 1:200-1:1000 IHC (Paraffin) : 1:50-1:100 |
| Limitations | This MMP2 antibody is available for research use only. |



Western blot analysis of MMP2 antibody and T47D lysate (1:200). Expected molecular weight: ~72 kDa (pro form), ~63 kDa (cleaved form).



MMP2 antibody immunohistochemistry analysis in formalin fixed and paraffin embedded human lung carcinoma.

Description

Application Notes

Titration of the MMP2 antibody may be required due to differences in protocols and secondary/substrate sensitivity.

Immunogen

This MMP2 antibody was produced from mouse immunized with MMP2 recombinant protein.

Storage

Aliquot the MMP2 antibody and store frozen at -20oC or colder. Avoid repeated freeze-thaw cycles.