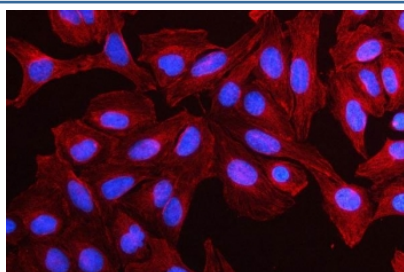


MMP19 Antibody / Matrix metalloproteinase 19 (RQ8318)

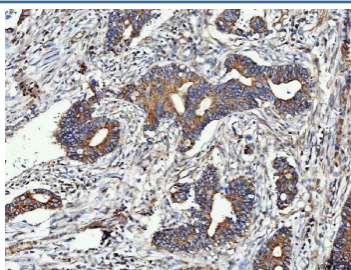
Catalog No.	Formulation	Size
RQ8318	0.5mg/ml if reconstituted with 0.2ml sterile DI water	100 ug

Bulk quote request

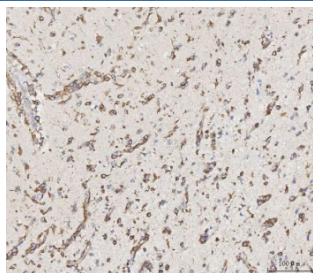
Availability	1-3 business days
Species Reactivity	Human
Format	Antigen affinity purified
Clonality	Polyclonal (rabbit origin)
Isotype	Rabbit IgG
Purity	Antigen affinity purified
Buffer	Lyophilized from 1X PBS with 2% Trehalose
UniProt	Q99542
Applications	Western Blot : 0.5-1ug/ml Immunohistochemistry (FFPE) : 2-5ug/ml Immunofluorescence : 5ug/ml Flow Cytometry : 1-3ug/million cells ELISA : 0.1-0.5ug/ml
Limitations	This MMP19 antibody is available for research use only.



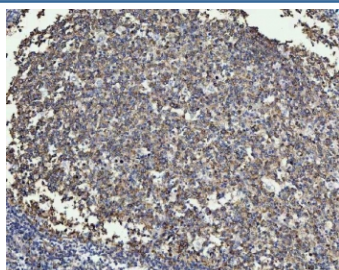
Immunofluorescent staining of FFPE human U-2 OS cells with MMP19 antibody (red) and DAPI nuclear stain (blue). HIER: steam section in pH6 citrate buffer for 20 min.



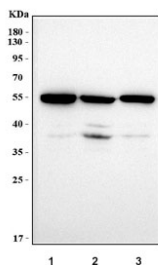
IHC staining of FFPE human colorectal adenocarcinoma tissue with MMP19 antibody. HIER: boil tissue sections in pH8 EDTA for 20 min and allow to cool before testing.



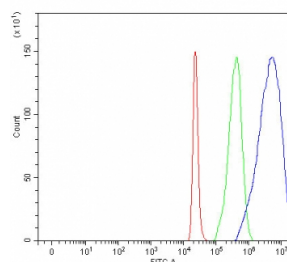
IHC staining of FFPE human glioma tissue with MMP19 antibody. HIER: boil tissue sections in pH8 EDTA for 20 min and allow to cool before testing.



IHC staining of FFPE human tonsil tissue with MMP19 antibody. HIER: boil tissue sections in pH8 EDTA for 20 min and allow to cool before testing.



Western blot testing of human 1) SH-SY5Y, 2) 293T and 3) HeLa cell lysate with MMP19 antibody. Predicted molecular weight ~57 kDa.



Flow cytometry testing of fixed and permeabilized human 293T cells with MMP19 antibody at 1ug/million cells (blocked with goat sera); Red=cells alone, Green=isotype control, Blue= MMP19 antibody.

Description

Matrix metalloproteinase-19 (MMP-19) also known as matrix metalloproteinase RAS1 is an enzyme that in humans is encoded by the MMP19 gene. This gene encodes a member of a family of proteins that are involved in the breakdown of extracellular matrix in normal physiological processes, such as embryonic development, reproduction, and tissue remodeling, as well as in disease processes, such as arthritis and metastasis. The encoded protein is secreted as an inactive proprotein, which is activated upon cleavage by extracellular proteases. Alternative splicing results in multiple transcript variants for this gene.

Application Notes

Optimal dilution of the MMP19 antibody should be determined by the researcher.

Immunogen

An E.coli-derived human recombinant protein (L120-D437) was used as the immunogen for the MMP19 antibody.

Storage

After reconstitution, the MMP19 antibody can be stored for up to one month at 4oC. For long-term, aliquot and store at

-20oC. Avoid repeated freezing and thawing.