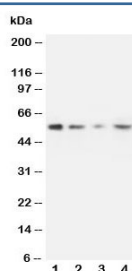


MMP10 Antibody (R30451)

Catalog No.	Formulation	Size
R30451	0.5mg/ml if reconstituted with 0.2ml sterile DI water	100 ug

Bulk quote request

Availability	1-3 business days
Species Reactivity	Human
Format	Antigen affinity purified
Clonality	Polyclonal (rabbit origin)
Isotype	Rabbit IgG
Purity	Antigen affinity
Buffer	Lyophilized from 1X PBS with 2.5% BSA and 0.025% sodium azide/thimerosal
UniProt	P09238
Localization	Secreted
Applications	Western Blot : 0.5-1ug/ml
Limitations	This MMP10 antibody is available for research use only.



Western blot testing of MMP10 antibody and Lane 1: recombinant human protein 10ng; 2: 5ng; 3: 2.5ng; 4: HeLa lysate.

Description

Stromelysin-2 also known as matrix metalloproteinase-10 or transin-2 is an enzyme that in humans is encoded by the MMP10 gene. Proteins of the matrix metalloproteinase(MMP) family are involved in the breakdown of extracellular matrix in normal physiological processes, such as embryonic development, reproduction, and tissue remodeling, as well as in disease processes, such as arthritis and metastasis. Most MMP's are secreted as inactive proproteins which are activated when cleaved by extracellular proteinases. The enzyme encoded by this gene degrades proteoglycans and fibronectin. The gene is part of a cluster of MMP genes which localize to chromosome 11q22.3.

Application Notes

The stated application concentrations are suggested starting amounts. Titration of the MMP10 antibody may be required due to differences in protocols and secondary/substrate sensitivity.

Immunogen

An amino acid sequence from the C-terminus of human MMP10 (FDENSQSMEQGFP) was used as the immunogen for this MMP10 antibody.

Storage

After reconstitution, the MMP10 antibody can be stored for up to one month at 4°C. For long-term, aliquot and store at -20°C. Avoid repeated freezing and thawing.