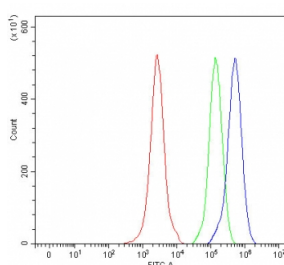


MMACHC Antibody / CbIC (RQ8304)

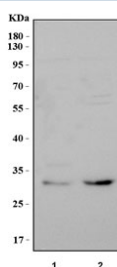
| Catalog No. | Formulation | Size |
|-------------|---|--------|
| RQ8304 | 0.5mg/ml if reconstituted with 0.2ml sterile DI water | 100 ug |

Bulk quote request

| | |
|---------------------------|---|
| Availability | 1-3 business days |
| Species Reactivity | Human |
| Format | Antigen affinity purified |
| Clonality | Polyclonal (rabbit origin) |
| Isotype | Rabbit IgG |
| Purity | Antigen affinity purified |
| Buffer | Lyophilized from 1X PBS with 2% Trehalose |
| UniProt | Q9Y4U1 |
| Applications | Western Blot : 0.5-1ug/ml Flow Cytometry : 1-3ug/million cells ELISA : 0.1-0.5ug/ml |
| Limitations | This MMACHC antibody is available for research use only. |



Flow cytometry testing of fixed and permeabilized human JK cells with MMACHC antibody at 1ug/million cells (blocked with goat sera); Red=cells alone, Green=isotype control, Blue= MMACHC antibody.



Western blot testing of human 1) HepG2 and 2) K562 cell lysate with MMACHC antibody. Predicted molecular weight ~32 kDa.

Description

Methylmalonic aciduria and homocystinuria type C protein (MMACHC) is a protein that in humans is encoded by the MMACHC gene. The exact function of the protein encoded by this gene is not known, however, its C-terminal region shows similarity to TonB, a bacterial protein involved in energy transduction for cobalamin (vitamin B12) uptake. Hence, it is postulated that this protein may have a role in the binding and intracellular trafficking of cobalamin. Mutations in this gene are associated with methylmalonic aciduria and homocystinuria type cblC.

Application Notes

Optimal dilution of the MMACHC antibody should be determined by the researcher.

Immunogen

An E.coli-derived human recombinant protein (M1-K242) was used as the immunogen for the MMACHC antibody.

Storage

After reconstitution, the MMACHC antibody can be stored for up to one month at 4oC. For long-term, aliquot and store at -20oC. Avoid repeated freezing and thawing.