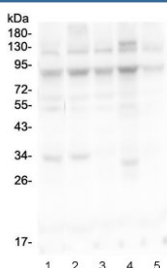


MLH1 Antibody (R32088)

Catalog No.	Formulation	Size
R32088	0.5mg/ml if reconstituted with 0.2ml sterile DI water	100 ug

Bulk quote request

Availability	1-3 business days
Species Reactivity	Human
Format	Antigen affinity purified
Clonality	Polyclonal (rabbit origin)
Isotype	Rabbit IgG
Purity	Antigen affinity
Buffer	Lyophilized from 1X PBS with 2.5% BSA and 0.025% sodium azide
UniProt	P40692
Applications	Western Blot : 0.1-0.5ug/ml
Limitations	This MLH1 antibody is available for research use only.



Western blot testing of human 1) HEK293, 2) HeLa, 3) COLO320, 4) T-47D and 5) A549 cell lysate with MLH1 antibody. Predicted molecular weight: 85/58/74 kDa (isoforms 1/2/3).

Description

MutL homolog 1, colon cancer, nonpolyposis type 2 (E. coli) is a protein that in humans is encoded by the MLH1 gene located on Chromosome 3. This gene was identified as a locus frequently mutated in hereditary nonpolyposis colon cancer (HNPCC). It is a human homolog of the E. coli DNA mismatch repair gene mutL, consistent with the characteristic alterations in microsatellite sequences (RER+phenotype) found in HNPCC. Alternative splicing results in multiple transcript variants encoding distinct isoforms. Additional transcript variants have been described, but their full-length natures have not been determined.

Application Notes

Optimal dilution of the MLH1 antibody should be determined by the researcher.

Immunogen

Amino acids KALRSHILPPKHFTEDGNILQLANLPDLYKVFERC of human MLH1 were used as the immunogen for the MLH1 antibody.

Storage

After reconstitution, the MLH1 antibody can be stored for up to one month at 4oC. For long-term, aliquot and store at -20oC. Avoid repeated freezing and thawing.