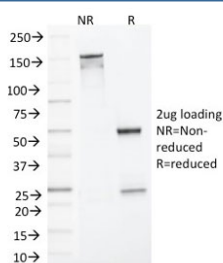


MLH1 Antibody / MutL protein homolog 1 [clone MLH1/1324] (V7953)

| Catalog No. | Formulation | Size |
|----------------|--|--------|
| V7953-100UG | 0.2 mg/ml in 1X PBS with 0.1 mg/ml BSA (US sourced) and 0.05% sodium azide | 100 ug |
| V7953-20UG | 0.2 mg/ml in 1X PBS with 0.1 mg/ml BSA (US sourced) and 0.05% sodium azide | 20 ug |
| V7953SAF-100UG | 1 mg/ml in 1X PBS; BSA free, sodium azide free | 100 ug |

Bulk quote request

| | |
|---------------------------|--|
| Availability | 1-3 business days |
| Species Reactivity | Human |
| Format | Purified |
| Clonality | Monoclonal (mouse origin) |
| Isotype | Mouse IgG2b, kappa |
| Clone Name | MLH1/1324 |
| Purity | Protein G affinity chromatography |
| UniProt | P40692 |
| Applications | ELISA (order BSA-free Format For Coating) : |
| Limitations | This MLH1 antibody is available for research use only. |



SDS-PAGE analysis of purified, BSA-free MLH1 antibody as confirmation of integrity and purity.

Description

This MAb recognizes a protein of 83kDa, identified as MLH1. Defects in MLH1 are the cause of hereditary non-polyposis colorectal cancer type 2 (HNPCC2). Heterodimerizes with PMS2 to form MutL alpha, a component of the post-replicative DNA mismatch repair system (MMR). DNA repair is initiated by MutS alpha (MSH2-MSH6) or MutS beta (MSH2-MSH6)

binding to a dsDNA mismatch, then MutL alpha is recruited to the heteroduplex. Assembly of the MutL-MutS-heteroduplex ternary complex in presence of RFC and PCNA is sufficient to activate endonuclease activity of PMS2. It introduces single-strand breaks near the mismatch and thus generates new entry points for the exonuclease EXO1 to degrade the strand containing the mismatch. DNA methylation would prevent cleavage and therefore assure that only the newly mutated DNA strand is going to be corrected. MutL alpha (MLH1-PMS2) interacts physically with the clamp loader subunits of DNA polymerase III, suggesting that it may play a role to recruit the DNA polymerase III to the site of the MMR. Also implicated in DNA damage signaling, a process, which induces cell cycle arrest and can lead to apoptosis in case of major DNA damages. Heterodimerizes with MLH3 to form MutL gamma, which plays a role in meiosis.

Application Notes

Optimal dilution of the MLH1 antibody should be determined by the researcher.

Immunogen

A recombinant human MLH1 protein was used as the immunogen for this MLH1 antibody.

Storage

Store the MLH1 antibody at 2-8oC (with azide) or aliquot and store at -20oC or colder (without azide).