

## MLH1 Antibody (F41625)

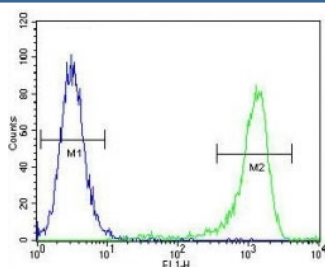
Catalog No.	Formulation	Size
F41625-0.4ML	In 1X PBS, pH 7.4, with 0.09% sodium azide	0.4 ml
F41625-0.08ML	In 1X PBS, pH 7.4, with 0.09% sodium azide	0.08 ml

**Bulk quote request**

<b>Availability</b>	1-3 business days
<b>Species Reactivity</b>	Human
<b>Format</b>	Antigen affinity purified
<b>Clonality</b>	Polyclonal (rabbit origin)
<b>Isotype</b>	Rabbit Ig
<b>Purity</b>	Antigen affinity
<b>UniProt</b>	P40692
<b>Applications</b>	Western Blot : 1:1000 Flow Cytometry : 1:10-1:50
<b>Limitations</b>	This MLH1 antibody is available for research use only.

95  
72  
55  
36  
28  
17

MLH1 antibody western blot analysis in K562 lysate. Predicted molecular weight: 85/58/74 kDa (isoforms 1/2/3).



MLH1 antibody flow cytometric analysis of K562 cells (green) compared to a [negative control](#) (blue). FITC-conjugated goat-anti-rabbit secondary Ab was used for the analysis.

## Description

This gene was identified as a locus frequently mutated in hereditary nonpolyposis colon cancer (HNPCC). It is a human homolog of the E. coli DNA mismatch repair gene mutL, consistent with the characteristic alterations in microsatellite sequences (RER+phenotype) found in HNPCC. Alternative splicing results in multiple transcript variants encoding distinct isoforms. Additional transcript variants have been described, but their full-length natures have not been determined.

## Application Notes

Titration of the MLH1 antibody may be required due to differences in protocols and secondary/substrate sensitivity.

## Immunogen

A portion of amino acids 452-480 from the human protein was used as the immunogen for this MLH1 antibody.

## Storage

Aliquot the MLH1 antibody and store frozen at -20oC or colder. Avoid repeated freeze-thaw cycles.