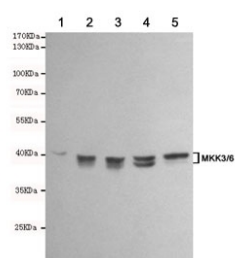


## MKK3/6 Antibody [clone 8A11-G11-G11] (F54043)

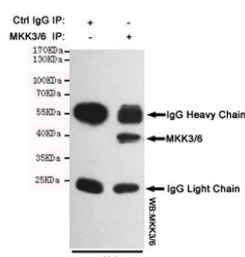
Catalog No.	Formulation	Size
F54043-0.1ML	In PBS with 50% glycerol and 0.03% ProClin 300	0.1 ml

**Bulk quote request**

<b>Availability</b>	1-3 business days
<b>Species Reactivity</b>	Human, Rat
<b>Format</b>	Purified
<b>Clonality</b>	Monoclonal (mouse origin)
<b>Isotype</b>	Mouse IgG1
<b>Clone Name</b>	8A11-G11-G11
<b>Purity</b>	Protein G affinity
<b>UniProt</b>	P52564
<b>Applications</b>	Western Blot : 1:1000 Immunoprecipitation : suitable
<b>Limitations</b>	This MKK3/6 antibody is available for research use only.



Western blot testing of 1) rat PC12, 2) rat C6, 3) human Ramos, 4) human Jurkat and 5) human HeLa cell lysates using MKK3/6 antibody at 1:1000. Predicted molecular weight: 39 kDa (MKK3) and 37 kDa (MKK6).



Immunoprecipitation of MKK3/6 from HeLa cell lysate, and subsequent western blot testing, using MKK3/6 antibody.

## Description

Dual specificity kinase. Is activated by cytokines and environmental stress in vivo. Catalyzes the concomitant phosphorylation of a threonine and a tyrosine residue in the MAP kinase p38.

## Application Notes

The stated application concentrations are suggested starting points. Titration of the MKK3/6 antibody may be required due to differences in protocols and secondary/substrate sensitivity.

## Immunogen

A human recombinant partial MKK6 protein was used as the immunogen for this MKK3/6 antibody.

## Storage

Store the MKK3/6 antibody at -20°C.