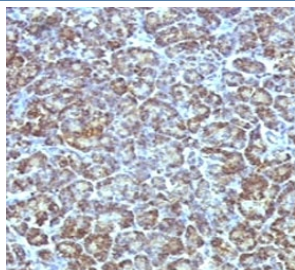


Mitochondrial Antibody [clone MTL56] (V7023)

Catalog No.	Formulation	Size
V7023-100UG	0.2 mg/ml in 1X PBS with 0.1 mg/ml BSA (US sourced) and 0.05% sodium azide	100 ug
V7023-20UG	0.2 mg/ml in 1X PBS with 0.1 mg/ml BSA (US sourced) and 0.05% sodium azide	20 ug
V7023SAF-100UG	1 mg/ml in 1X PBS; BSA free, sodium azide free	100 ug
V7023IHC-7ML	Prediluted in 1X PBS with 0.1 mg/ml BSA (US sourced) and 0.05% sodium azide; *For IHC use only*	7 ml

[Bulk quote request](#)

Species Reactivity	Human
Format	Purified
Clonality	Monoclonal (mouse origin)
Isotype	Mouse IgG1, kappa
Clone Name	MTL56
Purity	Protein G affinity chromatography
Localization	Mitochondria
Applications	Immunohistochemistry (FFPE) : 1-2ug/ml for 30 min at RT (1) Prediluted IHC Only Format : incubate for 30 min at RT (2)
Limitations	This Mitochondrial antibody is available for research use only.



IHC testing of FFPE human pancreas stained with Mitochondrial antibody (MLT56).
FFPE staining is enhanced by boiling tissue sections in pH 9 10mM Tris with 1mM EDTA for 10-20 min followed by cooling at RT for 20 min.

Description

The mitochondrial marker antibody is specific for an antigen associated with the mitochondria in human cells. It can be used to stain mitochondria in cell or tissue preparations and as a mitochondrial marker in subcellular fractions.

Application Notes

Titering of the Mitochondrial antibody may be required for optimal performance.

1. The prediluted format is supplied in a dropper bottle and is optimized for use in IHC. After epitope retrieval step (if required), drip mAb solution onto the tissue section and incubate at RT for 30 min.

Immunogen

Human mitochondria were used as the immunogen for this Mitochondrial antibody.

Storage

Store the Mitochondrial antibody at 2-8oC (with azide) or aliquot and store at -20oC or colder (without azide).