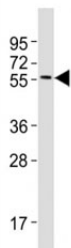


## MITF Antibody (F41536)

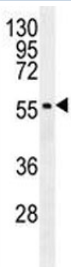
Catalog No.	Formulation	Size
F41536-0.4ML	In 1X PBS, pH 7.4, with 0.09% sodium azide	0.4 ml
F41536-0.08ML	In 1X PBS, pH 7.4, with 0.09% sodium azide	0.08 ml

[Bulk quote request](#)

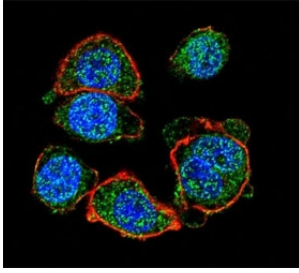
<b>Availability</b>	1-3 business days
<b>Species Reactivity</b>	Human
<b>Predicted Reactivity</b>	Mouse
<b>Format</b>	Antigen affinity purified
<b>Clonality</b>	Polyclonal (rabbit origin)
<b>Isotype</b>	Rabbit Ig
<b>Purity</b>	Antigen affinity
<b>UniProt</b>	O75030
<b>Applications</b>	Western Blot : 1:1000-2000 Immunofluorescence : 1:10-1:50 Flow Cytometry : 1:10-1:50
<b>Limitations</b>	This MITF antibody is available for research use only.



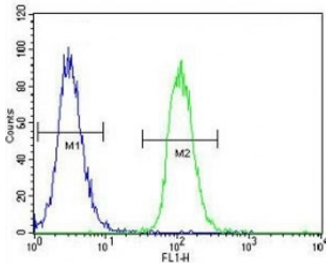
Western blot testing of MITF antibody at 1:2000 dilution + A375 lysate; Predicted molecular weight: 55-60 kDa.



MITF antibody western blot analysis in K562 lysate. Predicted molecular weight: 55-60 kDa.



Confocal immunofluorescent analysis of MITF antibody with HeLa cells followed by Alexa Fluor 488-conjugated goat anti-rabbit IgG (green). Actin filaments have been labeled with Alexa Fluor 555 Phalloidin (red). DAPI was used as a nuclear counterstain (blue).



MITF antibody flow cytometric analysis of K562 cells (right histogram) compared to a negative control (left histogram)

## Description

This gene encodes a transcription factor that contains both basic helix-loop-helix and leucine zipper structural features. It regulates the differentiation and development of melanocytes retinal pigment epithelium and is also responsible for pigment cell-specific transcription of the melanogenesis enzyme genes. Heterozygous mutations in the this gene cause auditory-pigmentary syndromes, such as Waardenburg syndrome type 2 and Tietz syndrome. Alternatively spliced transcript variants encoding different isoforms have been identified.

## Application Notes

Titration of the MITF antibody may be required due to differences in protocols and secondary/substrate sensitivity.

## Immunogen

A portion of amino acids 1-28 from the human protein was used as the immunogen for this MITF antibody.

## Storage

Aliquot the MITF antibody and store frozen at -20oC or colder. Avoid repeated freeze-thaw cycles.