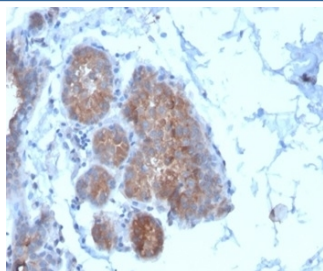


## Migfilin-1 Antibody / FLNB / Filamin B / FBLIM1 [clone FBLIM1/4600] (V9720)

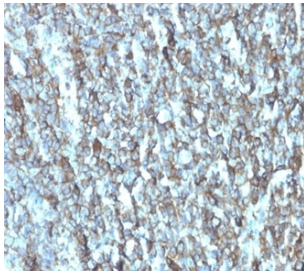
Catalog No.	Formulation	Size
V9720-100UG	0.2 mg/ml in 1X PBS with 0.1 mg/ml BSA (US sourced), 0.05% sodium azide	100 ug
V9720-20UG	0.2 mg/ml in 1X PBS with 0.1 mg/ml BSA (US sourced), 0.05% sodium azide	20 ug
V9720SAF-100UG	1 mg/ml in 1X PBS; BSA free, sodium azide free	100 ug

### Bulk quote request

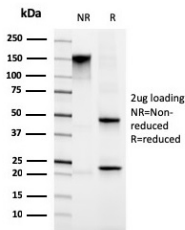
Availability	1-3 business days
Species Reactivity	Human
Format	Purified
Clonality	Monoclonal (mouse origin)
Isotype	Mouse IgG1, kappa
Clone Name	FBLIM1/4600
Purity	Protein A/G affinity
UniProt	Q8WUP2
Localization	Cytoplasm
Applications	Western Blot : 1-2ug/ml Immunofluorescence : 1-2ug/ml Immunohistochemistry (FFPE) : 1-2ug/ml
Limitations	This Migfilin-1 antibody is available for research use only.



IHC staining of FFPE human breast carcinoma tissue with Migfilin-1 antibody (clone FBLIM1/4600) at 2ug/ml. HIER: boil tissue sections in pH 9 10mM Tris with 1mM EDTA for 20 min and allow to cool before testing.

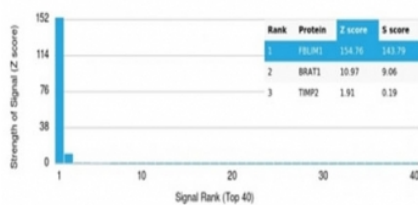


IHC staining of FFPE human breast carcinoma tissue with Migfilin-1 antibody (clone FBLIM1/4600) at 2ug/ml. HIER: boil tissue sections in pH 9 10mM Tris with 1mM EDTA for 20 min and allow to cool before testing.



SDS-PAGE analysis of purified, BSA-free Migfilin-1 antibody (clone FBLIM1/4600) as confirmation of integrity and purity.

Human Protein Microarray Specificity Validation



Analysis of HuProt(TM) microarray containing more than 19,000 full-length human proteins using Migfilin-1 antibody (clone FBLIM1/4600). These results demonstrate the foremost specificity of the FBLIM1/4600 mAb. Z- and S- score: The Z-score represents the strength of a signal that an antibody (in combination with a fluorescently-tagged anti-IgG secondary Ab) produces when binding to a particular protein on the HuProt(TM) array. Z-scores are described in units of standard deviations (SD's) above the mean value of all signals generated on that array. If the targets on the HuProt(TM) are arranged in descending order of the Z-score, the S-score is the difference (also in units of SD's) between the Z-scores. The S-score therefore represents the relative target specificity of an Ab to its intended target.

## Description

Serves as an anchoring site for cell-ECM adhesion proteins and filamin-containing actin filaments. Is implicated in cell shape modulation (spreading) and motility. May participate in the regulation of filamin-mediated cross-linking and stabilization of actin filaments. May also regulate the assembly of filamin-containing signaling complexes that control actin assembly. Promotes dissociation of FLNA from ITGB3 and ITGB7. Promotes activation of integrins and regulates integrin-mediated cell-cell adhesion. [UniProt]

## Application Notes

Optimal dilution of the Migfilin-1 antibody should be determined by the researcher.

## Immunogen

Recombinant full-length human protein was used as the immunogen for the Migfilin-1 antibody.

## Storage

Aliquot the Migfilin-1 antibody and store frozen at -20oC or colder. Avoid repeated freeze-thaw cycles.

