

MIF Antibody / Macrophage migration inhibitory factor (R34757)

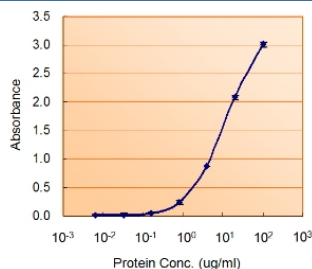
| Catalog No. | Formulation | Size |
|--------------|---|--------|
| R34757-100UG | 0.5 mg/ml in 1X TBS, pH7.3, with 0.5% BSA (US sourced) and 0.02% sodium azide | 100 ug |

[Bulk quote request](#)

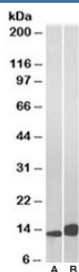
| | |
|-----------------------------|---|
| Availability | 1-3 business days |
| Species Reactivity | Human |
| Predicted Reactivity | Mouse, Rat |
| Format | Antigen affinity purified |
| Clonality | Polyclonal (goat origin) |
| Isotype | Goat Ig |
| Purity | Antigen affinity |
| Gene ID | 4282 |
| Localization | Secreted, cytoplasmic |
| Applications | Western Blot : 0.01-0.03ug/ml IHC (FFPE) : 5ug/ml Enzyme ImmunoAssay : used as capture for recombinant protein (coat at 1-3ug/ml) ELISA (peptide) LOD : 1:128000 |
| Limitations | This MIF antibody is available for research use only. |



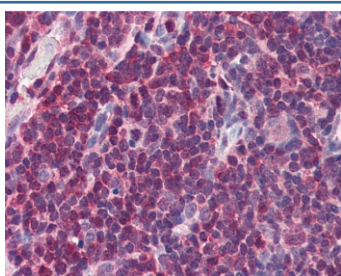
Western blot testing of human thymus lysate with MIF antibody at 0.01ug/ml. Predicted molecular weight ~13 kDa.



Sandwich ELISA using the MIF antibody at 1.5ug/ml as the detect.



Western blot of Daudi (A) and Jurkat (B) lysate with MIF antibody at 0.01ug/ml.
Predicted molecular weight ~13 kDa.



IHC testing of FFPE human thymus tissue with MIF antibody at 5ug/ml. Required HIER: steamed antigen retrieval with pH6 citrate buffer; AP-staining.

Description

Additional name(s) for this target protein: Macrophage migration inhibitory factor

Application Notes

Optimal dilution of the MIF antibody should be determined by the researcher.

Immunogen

Amino acids NAANVGWNNSTFA were used as the immunogen for this MIF antibody.

Storage

Aliquot and store the MIF antibody at -20oC.