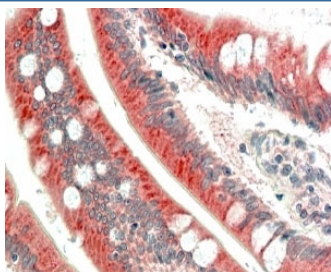


## MIC1 Antibody (R33508)

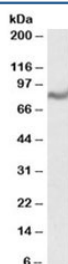
Catalog No.	Formulation	Size
R33508-100UG	0.5 mg/ml in 1X TBS, pH7.3, with 0.5% BSA (US sourced) and 0.02% sodium azide	100 ug

[Bulk quote request](#)

Availability	1-3 business days
Species Reactivity	Human
Predicted Reactivity	Dog, Mouse, Rat
Format	Antigen affinity purified
Clonality	Polyclonal (goat origin)
Isotype	Goat Ig
Purity	Antigen affinity
Gene ID	29919
Applications	Western Blot : 1-3ug/ml Immunohistochemistry (FFPE) : 5-10ug/ml ELISA (peptide) LOD : 1:32000
Limitations	This MIC1 antibody is available for research use only.



IHC staining of FFPE human small intestine with MIC1 antibody at 5ug/ml. HIER: steamed with pH6 citrate buffer, AP-staining.



Western blot testing of human breast lysate with MIC1 antibody at 1ug/ml. Predicted molecular weight: ~75kDa.

## Description

Additional name(s) for this target protein: Colon cancer-associated protein Mic1; C18orf8

## Application Notes

Optimal dilution of the MIC1 antibody should be determined by the researcher.

## Immunogen

Amino acids DKLNHEYKKYLDAEQ were used as the immunogen for this MIC1 antibody.

## Storage

Aliquot and store the MIC1 antibody at -20oC.