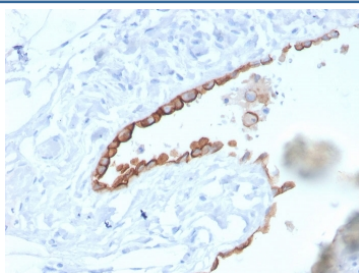


Mesothelin Antibody / MSLN [clone MSLN/3384] (V8529)

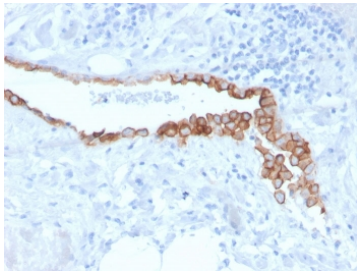
Catalog No.	Formulation	Size
V8529-100UG	0.2 mg/ml in 1X PBS with 0.1 mg/ml BSA (US sourced) and 0.05% sodium azide	100 ug
V8529-20UG	0.2 mg/ml in 1X PBS with 0.1 mg/ml BSA (US sourced) and 0.05% sodium azide	20 ug
V8529SAF-100UG	1 mg/ml in 1X PBS; BSA free, sodium azide free	100 ug

Bulk quote request

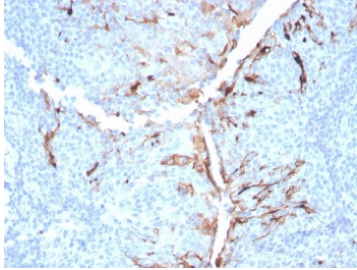
Availability	1-3 business days
Species Reactivity	Human
Format	Purified
Clonality	Monoclonal (mouse origin)
Isotype	Mouse IgG1, kappa
Clone Name	MSLN/3384
Purity	Protein G affinity chromatography
UniProt	Q13421
Localization	Cytoplasmic, cell surface, secreted
Applications	Immunohistochemistry (FFPE) : 1-2ug/ml for 30 minutes at RT
Limitations	This Mesothelin antibody is available for research use only.



IHC staining of FFPE human lung mesothelioma with Mesothelin antibody (clone MSLN/3384). HIER: boil tissue sections in pH 9 10mM Tris with 1mM EDTA for 20 min and allow to cool before testing.



IHC staining of FFPE human lung mesothelioma with Mesothelin antibody (clone MSLN/3384). HIER: boil tissue sections in pH 9 10mM Tris with 1mM EDTA for 20 min and allow to cool before testing.

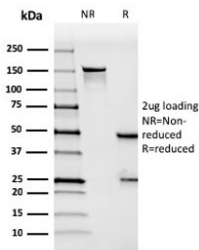


IHC staining of FFPE human lung mesothelioma with Mesothelin antibody (clone MSLN/3384). HIER: boil tissue sections in pH 9 10mM Tris with 1mM EDTA for 20 min and allow to cool before testing.

Human Protein Microarray Specificity Validation



Analysis of HuProt(TM) microarray containing more than 19,000 full-length human proteins using Mesothelin antibody (clone MSLN/3384). These results demonstrate the foremost specificity of the MSLN/3384 mAb. Z- and S- score: The Z-score represents the strength of a signal that an antibody (in combination with a fluorescently-tagged anti-IgG secondary Ab) produces when binding to a particular protein on the HuProt(TM) array. Z-scores are described in units of standard deviations (SD's) above the mean value of all signals generated on that array. If the targets on the HuProt(TM) are arranged in descending order of the Z-score, the S-score is the difference (also in units of SD's) between the Z-scores. The S-score therefore represents the relative target specificity of an Ab to its intended target.



SDS-PAGE analysis of purified, BSA-free Mesothelin antibody (clone MSLN/3384) as confirmation of integrity and purity.

Description

Mesothelin is a 40kDa glycosyl-phosphatidylinositol-anchored glycoprotein cleaved from a 69kDa precursor protein. Mesothelin immunoreactivity is high in cancers of the ovary (serous papillary, endometrioid and undifferentiated) and pancreas, with less frequent staining seen in adenocarcinomas of the endometrium, lung and stomach/esophagus. Mesothelin is one of the most sensitive markers for mesothelioma.

Application Notes

Optimal dilution of the Mesothelin antibody should be determined by the researcher.

Immunogen

A portion of amino acids 273-407 from the human protein was used as the immunogen for the Mesothelin antibody.

Storage

Store the Mesothelin antibody at 2-8°C (with azide) or aliquot and store at -20°C or colder (without azide).

