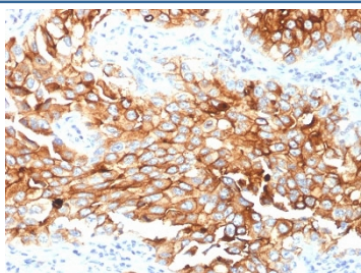


## Mesothelin Antibody / MSLN [clone MSLN/2131] (V3820)

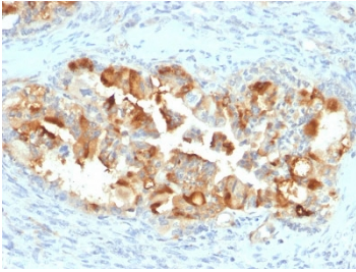
Catalog No.	Formulation	Size
V3820-100UG	0.2 mg/ml in 1X PBS with 0.1 mg/ml BSA (US sourced) and 0.05% sodium azide	100 ug
V3820-20UG	0.2 mg/ml in 1X PBS with 0.1 mg/ml BSA (US sourced) and 0.05% sodium azide	20 ug
V3820SAF-100UG	1 mg/ml in 1X PBS; BSA free, sodium azide free	100 ug

**Bulk quote request**

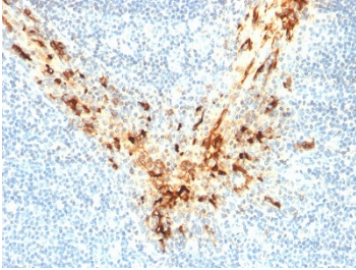
<b>Availability</b>	1-3 business days
<b>Species Reactivity</b>	Human, Mouse, Rat
<b>Format</b>	Purified
<b>Clonality</b>	Monoclonal (mouse origin)
<b>Isotype</b>	Mouse IgG2b, kappa
<b>Clone Name</b>	MSLN/2131
<b>Purity</b>	Protein G affinity
<b>UniProt</b>	Q13421
<b>Localization</b>	Cytoplasmic, cell surface, secreted
<b>Applications</b>	Immunohistochemistry (FFPE) : 1-2ug/ml for 30 min at RT Western Blot : 2-4ug/ml
<b>Limitations</b>	This Mesothelin antibody is available for research use only.



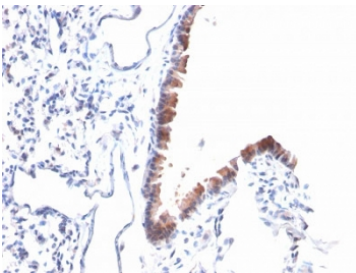
IHC testing of FFPE human lung mesothelioma with Mesothelin antibody (clone MSLN/2131). HIER: boil tissue sections in pH 9 10mM Tris with 1mM EDTA for 10-20 min followed by cooling at RT for 20 min.



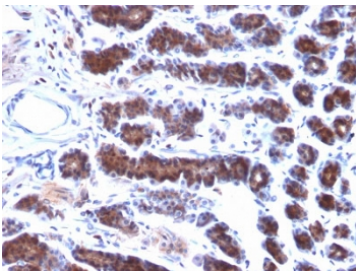
IHC testing of FFPE human endometrial carcinoma with Mesothelin antibody (clone MSLN/2131). HIER: boil tissue sections in pH 9 10mM Tris with 1mM EDTA for 10-20 min followed by cooling at RT for 20 min.



IHC testing of FFPE human tonsil with Mesothelin antibody (clone MSLN/2131). HIER: boil tissue sections in pH 9 10mM Tris with 1mM EDTA for 10-20 min followed by cooling at RT for 20 min.



IHC testing of FFPE mouse lung with Mesothelin antibody (clone MSLN/2131). HIER: boil tissue sections in pH 9 10mM Tris with 1mM EDTA for 10-20 min followed by cooling at RT for 20 min.

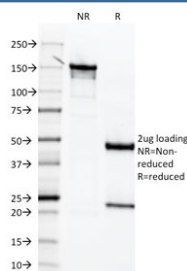


IHC testing of FFPE rat stomach with Mesothelin antibody (clone MSLN/2131). HIER: boil tissue sections in pH 9 10mM Tris with 1mM EDTA for 10-20 min followed by cooling at RT for 20 min.

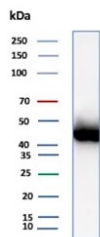
#### Human Protein Microarray Specificity Validation



Analysis of HuProt(TM) microarray containing more than 19,000 full-length human proteins using Mesothelin antibody (clone MSLN/2131). These results demonstrate the foremost specificity of the MSLN/2131 mAb.   
Z- and S- score: The Z-score represents the strength of a signal that an antibody (in combination with a fluorescently-tagged anti-IgG secondary Ab) produces when binding to a particular protein on the HuProt(TM) array. Z-scores are described in units of standard deviations (SD's) above the mean value of all signals generated on that array. If the targets on the HuProt(TM) are arranged in descending order of the Z-score, the S-score is the difference (also in units of SD's) between the Z-scores. The S-score therefore represents the relative target specificity of an Ab to its intended target.



SDS-PAGE analysis of purified, BSA-free Mesothelin antibody (clone MSLN/2131) as confirmation of integrity and purity.



Western blot testing of human OVCAR-3 cell lysate with Mesothelin antibody (clone MSLN/2131). Predicted molecular weight ~70 kDa (precursor), ~40 kDa (processed form).

## Description

Mesothelin is a 40kDa glycosyl-phosphatidylinositol-anchored glycoprotein cleaved from a 69kDa precursor protein. Mesothelin immunoreactivity is high in cancers of the ovary (serous papillary, endometrioid and undifferentiated) and pancreas, with less frequent staining seen in adenocarcinomas of the endometrium, lung and stomach/esophagus. Mesothelin is one of the most sensitive markers for mesothelioma.

## Application Notes

Optimal dilution of the MSLN antibody should be determined by the researcher.

## Immunogen

A portion of amino acids 273-407 from the human protein was used as the immunogen for this Mesothelin antibody.

## Storage

After reconstitution, the Mesothelin antibody can be stored for up to one month at 4oC. For long-term, aliquot and store at -20oC. Avoid repeated freezing and thawing.