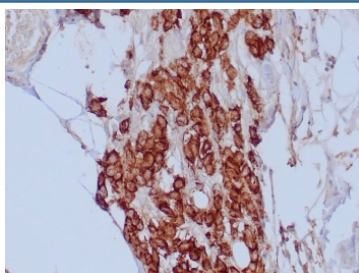


Mesothelial Cell Antibody [clone HBME-1] (V5833S)

Catalog No.	Formulation	Size
V5833S-0.5ML	Bioreactor concentrate with 0.05% sodium azide	0.5 ml
V5833S-0.1ML	Bioreactor concentrate with 0.05% sodium azide	0.1 ml

Bulk quote request

Availability	1-3 business days
Species Reactivity	Human
Format	Bioreactor concentrate
Clonality	Monoclonal (mouse origin)
Isotype	Mouse IgM, kappa
Clone Name	HBME-1
Localization	Cell membrane
Applications	Immunofluorescence : 1:100-1:200 Immunohistochemistry (FFPE) : 1:100-1:200
Limitations	This Mesothelial Cell antibody is available for research use only.



IHC staining of FFPE human mesothelioma tissue with Mesothelial Cell antibody (clone HBME-1). HIER: boil tissue sections in pH 9 10mM Tris with 1mM EDTA for 20 min and allow to cool before testing.

Description

Application Notes

Optimal dilution of the Mesothelial Cell antibody should be determined by the researcher.

Immunogen

Human mesothelioma cells from patients with malignant epithelial mesothelioma were used as the immunogen for the Mesothelial Cell antibody.

Storage

Aliquot the Mesothelial Cell antibody and store frozen at -20oC or colder. Avoid repeated freeze-thaw cycles.