

## Melan-A Antibody [clone M2-9E3] (V2117)

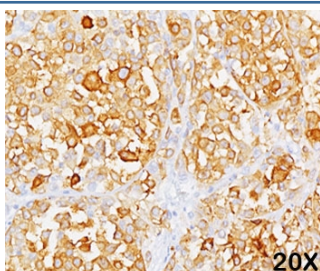
Catalog No.	Formulation	Size
V2117-100UG	0.2 mg/ml in 1X PBS with 0.1 mg/ml BSA (US sourced) and 0.05% sodium azide	100 ug
V2117-20UG	0.2 mg/ml in 1X PBS with 0.1 mg/ml BSA (US sourced) and 0.05% sodium azide	20 ug
V2117SAF-100UG	1 mg/ml in 1X PBS; BSA free, sodium azide free	100 ug
V2117IHC-7ML	Prediluted in 1X PBS with 0.1 mg/ml BSA (US sourced) and 0.05% sodium azide; *For IHC use only*	7 ml



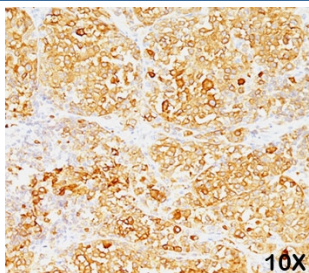
Citations (5)

[Bulk quote request](#)

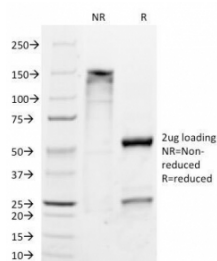
<b>Species Reactivity</b>	Human, Mouse, Rat
<b>Format</b>	Purified
<b>Clonality</b>	Monoclonal (mouse origin)
<b>Isotype</b>	Mouse IgG2b, kappa
<b>Clone Name</b>	M2-9E3
<b>Purity</b>	Protein G affinity chromatography
<b>Buffer</b>	1X PBS, pH 7.4
<b>Gene ID</b>	2315
<b>Localization</b>	Cytoplasmic
<b>Applications</b>	Flow Cytometry : 1-2ug/million cells Immunofluorescence : 1-2ug/ml Western Blot : 1-2ug/ml Immunohistochemistry (FFPE) : 1-2ug/ml for 30 min at RT
<b>Limitations</b>	This <b>Melan-A antibody</b> is available for research use only.



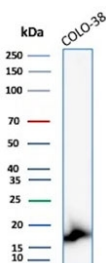
Formalin/paraffin human melanoma stained with MART-1 / Melan-A antibody (clone M2-9E3). Note cytoplasmic staining of cells.



Formalin/paraffin human melanoma stained with MART-1 / Melan-A antibody (clone M2-9E3). Note cytoplasmic staining of cells.



SDS-PAGE Analysis of Purified, BSA-Free Melan-A Antibody (clone M2-9E3). Confirmation of Integrity and Purity of the Antibody.



Western blot testing of human COLO-38 cell lysate with Melan-A antibody (clone M2-9E3). Expected molecular weight ~20 kDa with possible doublet.

## Description

This antibody recognizes a protein doublet of 20-22kDa, identified as MART-1 (Melanoma Antigen Recognized by T cells 1) or Melan-A. MART-1 is a melanocyte differentiation antigen recognized by autologous cytotoxic T lymphocytes. There are seven other melanoma associated antigens recognized by autologous cytotoxic T cells: MAGE-1, MAGE-3, tyrosinase, gp100, gp75, BAGE-1, and GAGE-1. Subcellular fractionation shows that MART-1 is present in melanosomes and endoplasmic reticulum. This MART-1 antibody labels melanomas and other tumors showing melanocytic differentiation. It is also a useful positive-marker for angiomyolipomas. The antibody does not stain tumor cells of epithelial, lymphoid, glial, or mesenchymal origin.

## Application Notes

The concentration stated for each application is a general starting point. Variations in protocols, secondaries and substrates may require the Melan-A antibody to be titrated up or down for optimal performance.

1. Staining of formalin-fixed tissues is enhanced by boiling tissue sections in pH 9 10mM Tris with 1mM EDTA for 10-20 min followed by cooling at RT for 20 minutes.
2. The prediluted format is supplied in a dropper bottle and is optimized for use in IHC. After epitope retrieval step (if required), drip mAb solution onto the tissue section and incubate at RT for 30 min.

## Immunogen

Recombinant human Melan-A protein was used as the immunogen for this antibody.

## Storage

Store the Melan-A antibody at 2-8°C (with azide) or aliquot and store at -20°C or colder (without azide).

## Alternate Names

Antigen LB39-AA, Antigen SK29-AA, Melanoma antigen recognized by T-cells 1, MLAN-A, MLANA, MART-1 antibody, Melan-A antibody

## References (2)