

Melan-A Antibody [clone A103] (V2121)

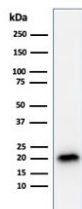
Catalog No.	Formulation	Size
V2121-100UG	0.2 mg/ml in 1X PBS with 0.1 mg/ml BSA (US sourced) and 0.05% sodium azide	100 ug
V2121-20UG	0.2 mg/ml in 1X PBS with 0.1 mg/ml BSA (US sourced) and 0.05% sodium azide	20 ug
V2121SAF-100UG	1 mg/ml in 1X PBS; BSA free, sodium azide free	100 ug
V2121IHC-7ML	Prediluted in 1X PBS with 0.1 mg/ml BSA (US sourced) and 0.05% sodium azide; *For IHC use only*	7 ml



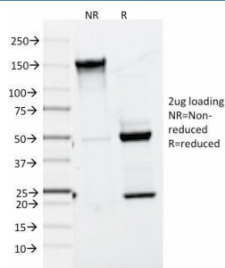
Citations (10)

[Bulk quote request](#)

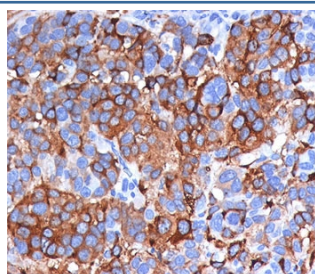
Species Reactivity	Human, Mouse, Rat
Format	Purified
Clonality	Monoclonal (mouse origin)
Isotype	Mouse IgG1, kappa
Clone Name	A103
Purity	Protein G affinity chromatography
Buffer	1X PBS, pH 7.4
Gene ID	2315
Localization	Cytoplasmic
Applications	Flow Cytometry : 1-2ug/million cells Immunofluorescence : 1-2ug/ml Western Blot : 1-2ug/ml Immunohistochemistry (FFPE) : 1-2ug/ml for 30 min at RT
Limitations	This Melan-A antibody is available for research use only, not for diagnostic or therapeutic testing.



Western blot testing of human COLO-38 cell lysate with recombinant Melan-A antibody (clone A103). Expected molecular weight ~20 kDa with possible doublet.



SDS-PAGE Analysis of Purified, BSA-Free Melan-A Antibody (clone A103). Confirmation of Integrity and Purity of the Antibody.



IHC testing of FFPE human melanoma stained with Melan-A antibody (clone A103).

Description

Application Notes

Due to differences in protocols and secondary antibody used, the Melan-A antibody may require titration for optimal performance.

1. FFPE staining is enhanced by boiling sections in pH 9 10mM Tris with 1mM EDTA for 10-20 min followed by cooling at RT for 20 minutes.
2. The prediluted format is supplied in a dropper bottle and is optimized for use in IHC. After epitope retrieval step (if required), drip mAb solution onto the tissue section and incubate at RT for 30 min.

Immunogen

Recombinant human protein was used as the immunogen for the Melan-A antibody.

Storage

Store the Melan-A antibody at 2-8oC (with azide) or aliquot and store at -20oC or colder (without azide).

Alternate Names

Melanoma antigen recognized by T-cells 1, MLAN-A, MLANA, MART-1 antibody

References (1)

