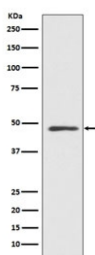


## MEK7 Antibody [clone HCF-13] (RQ4705)

Catalog No.	Formulation	Size
RQ4705	Antibody in PBS with 0.02% sodium azide, 50% glycerol and 0.4-0.5mg/ml BSA	100 ul

[Bulk quote request](#)

Availability	1-2 weeks
Species Reactivity	Human
Format	Purified
Clonality	Rabbit Monoclonal
Isotype	Rabbit IgG
Clone Name	HCF-13
Purity	Affinity purified
UniProt	O14733
Applications	Western Blot : 1:1000-1:2000
Limitations	This MEK7 antibody is available for research use only.



Western blot testing of human HeLa cell lysate with MEK7 antibody. Predicted molecular weight ~47 kDa.

### Description

The protein encoded by this gene is a dual specificity protein kinase that belongs to the MAP kinase kinase family. This kinase specifically activates MAPK8/JNK1 and MAPK9/JNK2, and this kinase itself is phosphorylated and activated by MAP kinase kinase kinases including MAP3K1/MEKK1, MAP3K2/MEKK2, MAP3K3/MEKK5, and MAP4K2/GCK. This kinase is involved in the signal transduction mediating the cell responses to proinflammatory cytokines, and environmental stresses. [RefSeq]

### Application Notes

Optimal dilution of the MEK7 antibody should be determined by the researcher.

### **Immunogen**

A synthetic peptide specific to human MEK7 / MAP2K7 was used as the immunogen for the MEK7 antibody.

### **Storage**

Store the MEK7 antibody at -20oC.