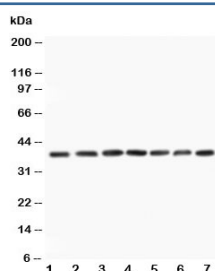


MEK3 Antibody / MAP2K3 / MKK3 (R30447)

| Catalog No. | Formulation | Size |
|-------------|---|--------|
| R30447 | 0.5mg/ml if reconstituted with 0.2ml sterile DI water | 100 ug |

Bulk quote request

| | |
|---------------------------|--|
| Availability | 1-3 business days |
| Species Reactivity | Human, Mouse, Rat |
| Format | Antigen affinity purified |
| Clonality | Polyclonal (rabbit origin) |
| Isotype | Rabbit IgG |
| Purity | Antigen affinity |
| Buffer | Lyophilized from 1X PBS with 2.5% BSA and 0.025% sodium azide/thimerosal |
| UniProt | P46734 |
| Localization | Cytoplasmic |
| Applications | Western Blot : 0.5-1ug/ml |
| Limitations | This MEK3 antibody is available for research use only. |



Western blot testing of MEK3 antibody and Lane 1: rat skeletal muscle; 2: rat kidney; 3: rat spleen; and human samples 4: HeLa; 5: A549; 6: Jurkat; 7: CEM; Predicted size: 39KD; Observed size: 39KD

Description

Dual specificity mitogen-activated protein kinase kinase 3 is an enzyme that in humans is encoded by the MAP2K3 gene. The protein encoded by this gene is a dual specificity protein kinase that belongs to the MAP kinase kinase family. This kinase is activated by mitogenic and environmental stress, and participates in the MAP kinase-mediated signaling cascade. It phosphorylates and thus activates MAPK14/p38-MAPK. This kinase can be activated by insulin, and is necessary for the expression of glucose transporter. Expression of RAS oncogene is found to result in the accumulation of the active form of this kinase, which thus leads to the constitutive activation of MAPK14, and confers oncogenic transformation of primary cells. Rampoldi et al.(1997) localized the MAP2K3 gene to 17q11.2.

Application Notes

The stated application concentrations are suggested starting amounts. Titration of the MEK3 antibody may be required due to differences in protocols and secondary/substrate sensitivity.

Immunogen

An amino acid sequence from the N-terminus of human MEK3 (RNLDSRTFITIGDRNFE) was used as the immunogen for this MEK3 antibody (100% homologous in human, mouse and rat).

Storage

After reconstitution, the MEK3 antibody can be stored for up to one month at 4°C. For long-term, aliquot and store at -20°C. Avoid repeated freezing and thawing.