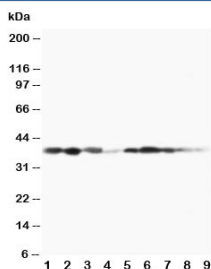


MEK3 Antibody / MAP2K3 / MKK3 (R30446)

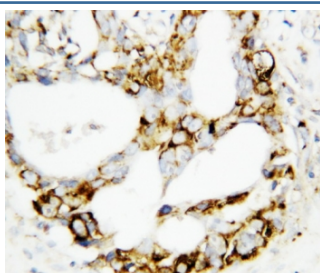
Catalog No.	Formulation	Size
R30446	0.5mg/ml if reconstituted with 0.2ml sterile DI water	100 ug

Bulk quote request

Availability	1-3 business days
Species Reactivity	Human, Mouse, Rat
Format	Antigen affinity purified
Clonality	Polyclonal (rabbit origin)
Isotype	Rabbit IgG
Purity	Antigen affinity
Buffer	Lyophilized from 1X PBS with 2.5% BSA and 0.025% sodium azide/thimerosal
UniProt	P46734
Localization	Cytoplasmic
Applications	Western Blot : 0.5-1ug/ml IHC (FFPE) : 0.5-1ug/ml
Limitations	This MEK3 antibody is available for research use only.



Western blot testing of MEK3 antibody and Lane 1: rat spleen; 2: rat thymus; 3: rat skeletal muscle; 4: rat kidney, and human samples 5: MCF-7; 6: HeLa; 7: Raji; 8: CEM; 9: COLO320 cell lysate. Expected/observed molecular weight ~39 kDa.



IHC-P: MEK3 antibody testing of human breast cancer tissue

Description

Dual specificity mitogen-activated protein kinase kinase 3 is an enzyme that in humans is encoded by the MAP2K3 gene. The protein encoded by this gene is a dual specificity protein kinase that belongs to the MAP kinase kinase family. This kinase is activated by mitogenic and environmental stress, and participates in the MAP kinase-mediated signaling cascade. It phosphorylates and thus activates MAPK14/p38-MAPK. This kinase can be activated by insulin, and is necessary for the expression of glucose transporter. Expression of RAS oncogene is found to result in the accumulation of the active form of this kinase, which thus leads to the constitutive activation of MAPK14, and confers oncogenic transformation of primary cells. Rampoldi et al.(1997) localized the MAP2K3 gene to 17q11.2.

Application Notes

The stated application concentrations are suggested starting amounts. Titration of the MEK3 antibody may be required due to differences in protocols and secondary/substrate sensitivity.

Immunogen

An amino acid sequence from the C-terminus of human MEK3 (MEHPFFTLHKTKKTD) was used as the immunogen for this MEK3 antibody (100% homologous in human, mouse and rat).

Storage

After reconstitution, the MEK3 antibody can be stored for up to one month at 4oC. For long-term, aliquot and store at -20oC. Avoid repeated freezing and thawing.