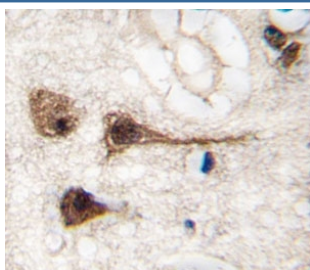


## MEF2C Antibody (F49562)

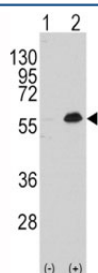
Catalog No.	Formulation	Size
F49562-0.4ML	In 1X PBS, pH 7.4, with 0.09% sodium azide	0.4 ml
F49562-0.08ML	In 1X PBS, pH 7.4, with 0.09% sodium azide	0.08 ml

[Bulk quote request](#)

<b>Availability</b>	1-3 business days
<b>Species Reactivity</b>	Human
<b>Predicted Reactivity</b>	Mouse, Bovine, Pig
<b>Format</b>	Antigen affinity purified
<b>Clonality</b>	Polyclonal (rabbit origin)
<b>Isotype</b>	Rabbit Ig
<b>Purity</b>	Antigen affinity
<b>UniProt</b>	Q06413
<b>Applications</b>	Western Blot : 1:1000 IHC (Paraffin) : 1:10-1:50
<b>Limitations</b>	This MEF2C antibody is available for research use only.



IHC analysis of FFPE human brain tissue stained with MEF2C antibody



Western blot analysis of MEF2C antibody and 293 cell lysate either nontransfected (Lane 1) or transiently transfected with the MEF2C gene (2).

## Description

Transcription activator which binds specifically to the MEF2 element present in the regulatory regions of many muscle-specific genes. Controls cardiac morphogenesis and myogenesis, and is also involved in vascular development. Plays an essential role in hippocampal-dependent learning and memory by suppressing the number of excitatory synapses and thus regulating basal and evoked synaptic transmission. Crucial for normal neuronal development, distribution, and electrical activity in the neocortex. Necessary for proper development of megakaryocytes and platelets and for bone marrow B-lymphopoiesis. Required for B-cell survival and proliferation in response to BCR stimulation, efficient IgG1 antibody responses to T-cell-dependent antigens and for normal induction of germinal center B-cells. May also be involved in neurogenesis and in the development of cortical architecture (By similarity). Isoform 3 and isoform 4, which lack the repressor domain, are more active than isoform 1 and isoform 2. [UniProt]

## Application Notes

Titration of the MEF2C antibody may be required due to differences in protocols and secondary/substrate sensitivity.

## Immunogen

A portion of amino acids 278-307 from the human protein was used as the immunogen for this MEF2C antibody.

## Storage

Aliquot the MEF2C antibody and store frozen at -20oC or colder. Avoid repeated freeze-thaw cycles.