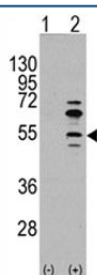


MEF2C Antibody (F49561)

Catalog No.	Formulation	Size
F49561-0.4ML	In 1X PBS, pH 7.4, with 0.09% sodium azide	0.4 ml
F49561-0.08ML	In 1X PBS, pH 7.4, with 0.09% sodium azide	0.08 ml

Bulk quote request

Availability	1-3 business days
Species Reactivity	Human
Predicted Reactivity	Bovine, Chicken, Mouse, Pig, Rat, Xenopus
Format	Antigen affinity purified
Clonality	Polyclonal (rabbit origin)
Isotype	Rabbit Ig
Purity	Antigen affinity
UniProt	Q06413
Applications	Western Blot : 1:1000
Limitations	This MEF2C antibody is available for research use only.



Western blot analysis of MEF2C antibody and 293 cell lysate (2 ug/lane) either nontransfected (Lane 1) or transiently transfected with the MEF2C gene (2).

Description

MEF2C is a transcription activator which binds specifically to the MEF2 element present in the regulatory regions of many muscle-specific genes. This protein controls cardiac morphogenesis and myogenesis, and is also involved in vascular development. It may also be involved in neurogenesis and in the development of cortical architecture.

Application Notes

Titration of the MEF2C antibody may be required due to differences in protocols and secondary/substrate sensitivity.

Immunogen

A portion of amino acids 37-66 from the human protein was used as the immunogen for this MEF2C antibody.

Storage

Aliquot the MEF2C antibody and store frozen at -20oC or colder. Avoid repeated freeze-thaw cycles.