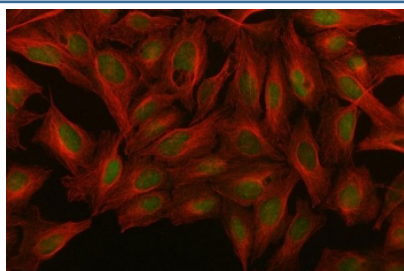


MED26 Antibody / Mediator of RNA polymerase II transcription subunit 26 (RQ8390)

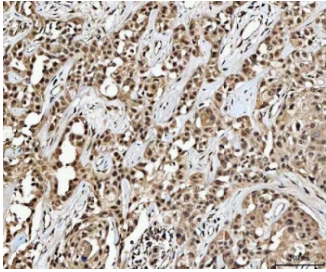
Catalog No.	Formulation	Size
RQ8390	0.5mg/ml if reconstituted with 0.2ml sterile DI water	100 ug

[Bulk quote request](#)

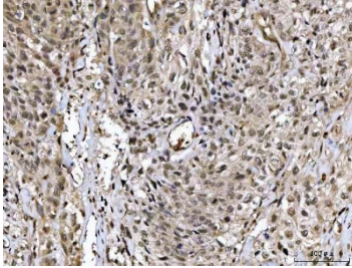
Availability	1-3 business days
Species Reactivity	Human
Format	Antigen affinity purified
Clonality	Polyclonal (rabbit origin)
Isotype	Rabbit IgG
Purity	Antigen affinity purified
Buffer	Lyophilized from 1X PBS with 2% Trehalose
UniProt	O95402
Localization	Nuclear
Applications	Western Blot : 0.5-1ug/ml Immunohistochemistry (FFPE) : 2-5ug/ml Immunofluorescence : 5ug/ml Flow Cytometry : 1-3ug/million cells Direct ELISA : 0.1-0.5ug/ml
Limitations	This MED26 antibody is available for research use only.



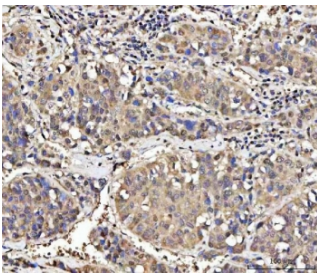
Immunofluorescent staining of FFPE human U-2 OS cells with MED26 antibody (green) and Beta Tubulin mAb (red). HIER: steam section in pH6 citrate buffer for 20 min.



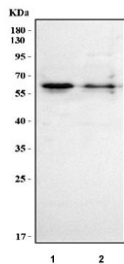
IHC staining of FFPE human parotid acinar cell carcinoma tissue with MED26 antibody. HIER: boil tissue sections in pH8 EDTA for 20 min and allow to cool before testing.



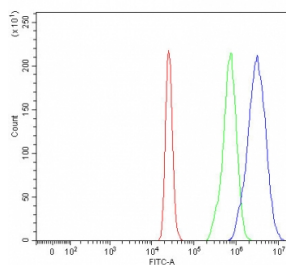
IHC staining of FFPE human bladder urothelial carcinoma tissue with MED26 antibody. HIER: boil tissue sections in pH8 EDTA for 20 min and allow to cool before testing.



IHC staining of FFPE human liver cancer tissue with MED26 antibody. HIER: boil tissue sections in pH8 EDTA for 20 min and allow to cool before testing.



Western blot testing of human 1) 293T and 2) HepG2 cell lysate with MED26 antibody. Predicted molecular weight ~65 kDa.



Flow cytometry testing of fixed and permeabilized human 293T cells with MED26 antibody at 1ug/million cells (blocked with goat sera); Red=cells alone, Green=isotype control, Blue= MED26 antibody.

Description

Mediator of RNA polymerase II transcription subunit 26 is an enzyme that in humans is encoded by the MED26 gene. The activation of gene transcription is a multistep process that is triggered by factors that recognize transcriptional enhancer sites in DNA. These factors work with co-activators to direct transcriptional initiation by the RNA polymerase II apparatus. The protein encoded by this gene is a subunit of the CRSP (cofactor required for SP1 activation) complex, which, along with TFIID, is required for efficient activation by SP1. This protein is also a component of other multisubunit complexes e.g. thyroid hormone receptor-(TR-) associated proteins which interact with TR and facilitate TR function on DNA templates in conjunction with initiation factors and cofactors.

Application Notes

Optimal dilution of the MED26 antibody should be determined by the researcher.

Immunogen

An E.coli-derived human recombinant protein (N24-D600) was used as the immunogen for the MED26 antibody.

Storage

After reconstitution, the MED26 antibody can be stored for up to one month at 4oC. For long-term, aliquot and store at -20oC. Avoid repeated freezing and thawing.