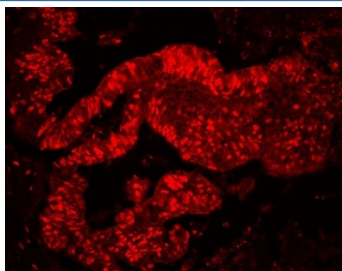


MCM7 Antibody (R31674)

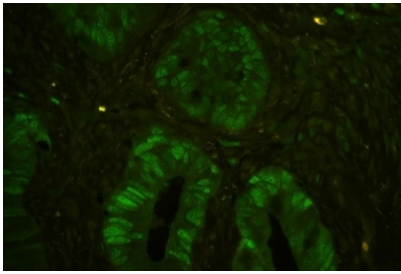
Catalog No.	Formulation	Size
R31674	0.5mg/ml if reconstituted with 0.2ml sterile DI water	100 ug

Bulk quote request

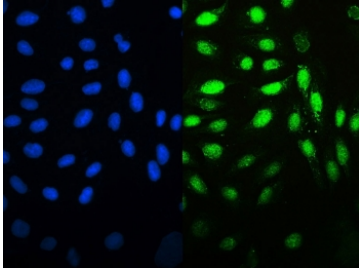
Availability	1-3 business days
Species Reactivity	Human, Mouse, Rat
Format	Antigen affinity purified
Clonality	Polyclonal (rabbit origin)
Isotype	Rabbit IgG
Purity	Antigen affinity
Buffer	Lyophilized from 1X PBS with 2.5% BSA and 0.025% sodium azide
Gene ID	4176
Localization	Nuclear
Applications	Western Blot : 0.5-1ug/ml Immunohistochemistry (FFPE) : 0.5-1ug/ml Immunocytochemistry : 0.5-1ug/ml Immunofluorescence : 2-4ug/ml Flow Cytometry : 1-3ug/million cells
Limitations	This MCM7 antibody is available for research use only.



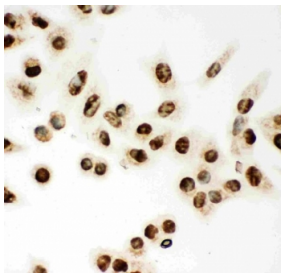
Immunofluorescent staining of FFPE human colon cancer tissue with MCM7 antibody.
HIER: steam section in pH6 citrate buffer for 20 min.



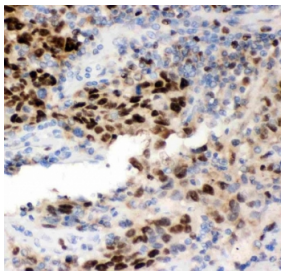
Immunofluorescent staining of FFPE human colon cancer tissue with MCM7 antibody. HIER: steam section in pH6 citrate buffer for 20 min.



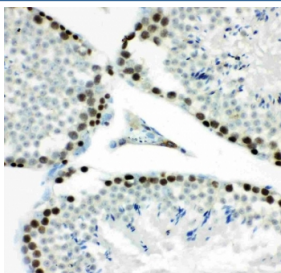
Immunofluorescent staining of FFPE human U-2 OS cells with MCM7 antibody (green) and DAPI nuclear stain (blue). HIER: steam section in pH6 citrate buffer for 20 min.



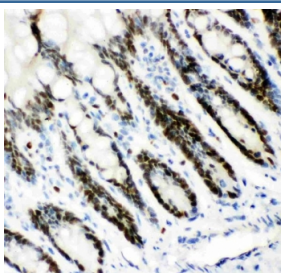
Immunocytochemical staining of FFPE human A549 cells with MCM7 antibody. HIER: steam section in pH6 citrate buffer for 20 min.



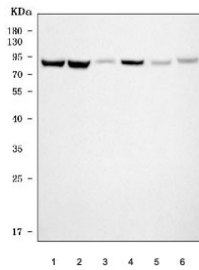
IHC staining of FFPE human lung cancer tissue with MCM7 antibody. HIER: boil tissue sections in pH8 EDTA for 20 min and allow to cool before testing.



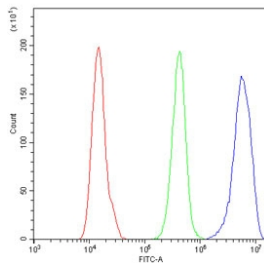
IHC staining of FFPE mouse testis tissue with MCM7 antibody. HIER: boil tissue sections in pH8 EDTA for 20 min and allow to cool before testing.



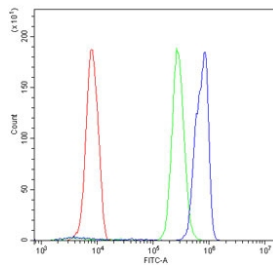
IHC staining of FFPE rat intestinal tissue with MCM7 antibody. HIER: boil tissue sections in pH8 EDTA for 20 min and allow to cool before testing.



Western blot testing of 1) human HeLa, 2) human K562, 3) human Jurkat, 4) human MCF7, 5) rat C6 and 6) mouse Neuro-2a cell lysate with MCM7 antibody. Expected molecular weight: 80-90 kDa.



Flow cytometry testing of human A431 cells with MCM7 antibody at 1ug/million cells (blocked with goat sera); Red=cells alone, Green=isotype control, Blue= MCM7 antibody.



Flow cytometry testing of human U937 cells with MCM7 antibody at 1ug/million cells (blocked with goat sera); Red=cells alone, Green=isotype control, Blue= MCM7 antibody.

Description

Minichromosome Maintenance 7, also called CDC47, is one of the highly conserved mini-chromosome maintenance proteins (MCM) that are essential for the initiation of eukaryotic genome replication. MCM7 plays a pivotal role in the G1/S phase transition, orchestrating the correct assembly of replication forks on chromosomal DNA and ensuring that all the genome is replicated once and not more than once at each cell cycle.

Application Notes

Variations in secondary/substrate sensitivities and test protocols may require the MCM7 antibody to be titrated for optimal performance.

Immunogen

Human partial recombinant protein (AA 526-719) was used as the immunogen for this MCM7 antibody.

Storage

The lyophilized MCM7 antibody can be stored at 4oC to -20oC. After reconstitution, aliquot and store at -20oC. Avoid repeated freeze/thaws.

