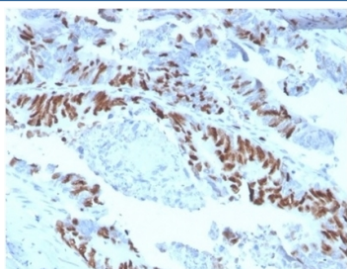


## MCM2 Antibody [clone MCM2/3678] (V9409)

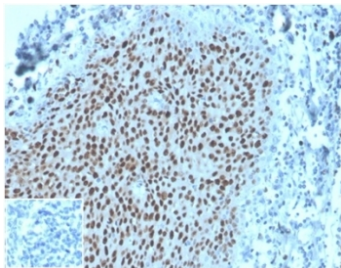
Catalog No.	Formulation	Size
V9409-100UG	0.2 mg/ml in 1X PBS with 0.1 mg/ml BSA (US sourced), 0.05% sodium azide	100 ug
V9409-20UG	0.2 mg/ml in 1X PBS with 0.1 mg/ml BSA (US sourced), 0.05% sodium azide	20 ug
V9409SAF-100UG	1 mg/ml in 1X PBS; BSA free, sodium azide free	100 ug

[Bulk quote request](#)

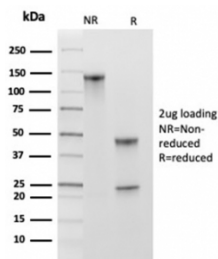
<b>Availability</b>	1-3 business days
<b>Species Reactivity</b>	Human
<b>Format</b>	Purified
<b>Clonality</b>	Monoclonal (mouse origin)
<b>Isotype</b>	Mouse IgG1, kappa
<b>Clone Name</b>	MCM2/3678
<b>Purity</b>	Protein A/G affinity
<b>UniProt</b>	P49736
<b>Localization</b>	Nuclear
<b>Applications</b>	Immunohistochemistry (FFPE) : 1-2ug/ml
<b>Limitations</b>	This MCM2 antibody is available for research use only.



IHC staining of FFPE human colon carcinoma tissue with MCM2 antibody (clone MCM2/3678). HIER: boil tissue sections in pH 9 10mM Tris with 1mM EDTA for 20 min and allow to cool before testing.



IHC staining of FFPE human tonsil tissue with MCM2 antibody (clone MCM2/3678).  
Negative control inset: PBS instead of primary antibody to control for secondary binding.  
HIER: boil tissue sections in pH 9 10mM Tris with 1mM EDTA for 20 min and allow to cool before testing.



SDS-PAGE analysis of purified, BSA-free MCM2 antibody (clone MCM2/3678) as confirmation of integrity and purity.

## Description

MCM2 is a component of the MCM2-7 complex (MCM complex) which is the putative replicative helicase essential for 'once per cell cycle' DNA replication initiation and elongation in eukaryotic cells. [UniProt]

## Application Notes

Optimal dilution of the MCM2 antibody should be determined by the researcher.

## Immunogen

A portion of amino acids 650-750 was used as the immunogen for the MCM2 antibody.

## Storage

Aliquot the MCM2 antibody and store frozen at -20oC or colder. Avoid repeated freeze-thaw cycles.