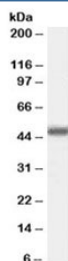


## MBD2 Antibody / Methyl-CpG-binding domain protein 2 (R35686)

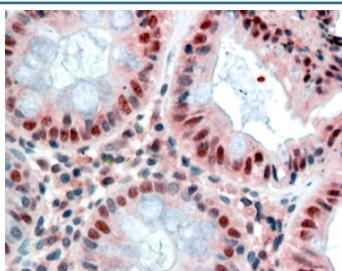
Catalog No.	Formulation	Size
R35686-100UG	0.5 mg/ml in 1X TBS, pH7.3, with 0.5% BSA (US sourced) and 0.02% sodium azide	100 ug

[Bulk quote request](#)

Availability	1-3 business days
Species Reactivity	Human
Predicted Reactivity	Dog, Mouse, Rat
Format	Antigen affinity purified
Clonality	Polyclonal (goat origin)
Isotype	Goat Ig
Purity	Antigen affinity
Gene ID	8932
Applications	Western Blot : 0.3-1ug/ml Immunohistochemistry (FFPE) : 2-4ug/ml ELISA (peptide) LOD : 1:64000
Limitations	This MBD2 antibody is available for research use only.



Western blot testing of Jurkat cell lysate with MBD2 antibody at 0.3ug/ml.  
Predicted/observed molecular weight: ~47kDa.



IHC staining of FFPE human colon with MBD2 antibody at 2.5ug/ml. HIER: steamed with pH6 citrate buffer, AP-staining.

## Description

Additional name(s) for this target protein: Methyl-CpG binding domain protein 2

## Application Notes

Optimal dilution of the MBD2 antibody should be determined by the researcher.

1. This MBD2 antibody is specific for isoform 1.

## Immunogen

Amino acids RNDPLNQNKGPDLN were used as the immunogen for this MBD2 antibody.

## Storage

Aliquot and store the MBD2 antibody at -20oC.