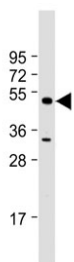


MBD2 Antibody / Methyl-CpG-binding domain protein 2 (F55113)

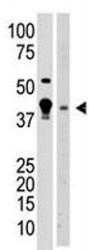
Catalog No.	Formulation	Size
F55113-0.4ML	In 1X PBS, pH 7.4, with 0.09% sodium azide	0.4 ml
F55113-0.08ML	In 1X PBS, pH 7.4, with 0.09% sodium azide	0.08 ml

[Bulk quote request](#)

Availability	1-2 business days
Species Reactivity	Human, Mouse
Format	Purified
Clonality	Polyclonal (rabbit origin)
Isotype	Rabbit Ig
Purity	Antigen affinity
UniProt	Q9UBB5
Applications	Western Blot : 1:500-1:1000
Limitations	This MBD2 antibody is available for research use only.



Western blot testing of human K562 cell lysate with MBD2 antibody. Expected molecular weight ~47 kDa.



Western blot testing of 1) human A375 and 2) mouse brain tissue lysate with MBD2 antibody. Expected molecular weight ~47 kDa.

Description

MBD2 is part of a family of proteins that possess a methyl-CpG-binding domain, allowing them to recognize and bind to DNA that has been modified by the addition of methyl groups. This binding has important implications for gene expression, as methylation can either activate or repress gene transcription. One of the most intriguing aspects of MBD2 is its ability to recruit other proteins to the methylated DNA, influencing the chromatin structure and ultimately determining whether a particular gene is switched on or off. This dynamic interplay between MBD2 and other regulatory proteins highlights the complexity of epigenetic regulation. Research into MBD2 has uncovered its involvement in a wide range of biological processes, from embryonic development to cancer progression. Dysregulation of MBD2 has been linked to aberrant gene expression patterns seen in various diseases, making it a potential target for therapeutic interventions.

Application Notes

The stated application concentrations are suggested starting points. Titration of the MBD2 antibody may be required due to differences in protocols and secondary/substrate sensitivity.

Immunogen

A portion of amino acids 120-152 from the human protein was used as the immunogen for the MBD2 antibody.

Storage

Aliquot the MBD2 antibody and store frozen at -20oC or colder. Avoid repeated freeze-thaw cycles.