

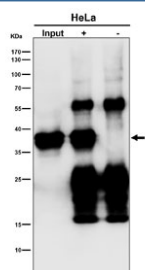
## MAS1L Antibody / MAS1-like / Mas-related G-protein coupled receptor MRG [clone 29M28] (RQ8774)

Catalog No.	Formulation	Size
RQ8774	Antibody in PBS with 0.02% sodium azide, 50% glycerol and 0.4-0.5mg/ml BSA	100 ul

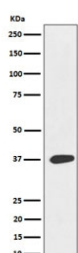
Recombinant **RABBIT MONOCLONAL**

[Bulk quote request](#)

<b>Availability</b>	1-3 days
<b>Species Reactivity</b>	Human
<b>Format</b>	Purified
<b>Clonality</b>	Recombinant Rabbit Monoclonal
<b>Isotype</b>	Rabbit IgG
<b>Clone Name</b>	29M28
<b>Purity</b>	Affinity chromatography
<b>UniProt</b>	P35410
<b>Applications</b>	Western Blot : 1:500-1:2000 Immunoprecipitation : 1:50
<b>Limitations</b>	This MAS1L antibody is available for research use only.



Immunoprecipitation of MAS1L protein from 500ug of human HeLa whole cell lysate with MAS1L antibody at 1:50. Western blot testing done at 1:1000.



Western blot testing of human HeLa cell lysate with MAS1L antibody. Predicted molecular weight ~42 kDa.

## Description

Mas-related G-protein coupled receptor MRG is a protein that in humans is encoded by the MAS1L gene.

## Application Notes

Optimal dilution of the MAS1L antibody should be determined by the researcher.

## Immunogen

A synthetic peptide specific to human MAS1L protein was used as the immunogen for the MAS1L Antibody.

## Storage

Store the MAS1L antibody at -20oC.