

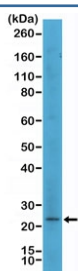
MART1 Antibody / Melan-A [clone RM333] (R20357)

Catalog No.	Formulation	Size
R20357-0.1ML	Antibody in PBS with 50% glycerol, 1% BSA and 0.09% sodium azide	100 ul

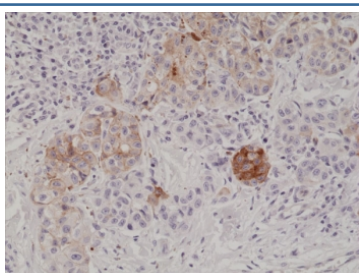
Recombinant **RABBIT MONOCLONAL**

[Bulk quote request](#)

Availability	1-3 business days
Species Reactivity	Human
Format	Purified
Clonality	Recombinant Rabbit Monoclonal
Isotype	Rabbit IgG
Clone Name	RM333
Purity	Protein A purified from animal origin-free supernatant
UniProt	Q16655
Localization	Cytoplasmic
Applications	Immunohistochemistry (FFPE) : 1:500-1:1000 Western Blot : 1:500-1:1000
Limitations	This recombinant MART1 antibody is available for research use only.



Western blot testing of human SK-MEL-2 cell lysate with recombinant MART1 antibody at 1:500. Expected molecular weight ~20 kDa with possible doublet.



IHC staining of FFPE human melanoma tissue with recombinant MART1 antibody at 1:1000.

Description

This antibody reacts to human MART1 (Melanoma antigen recognized by T-cells-1).

Application Notes

The stated application concentrations are suggested starting points. Titration of the recombinant MART1 antibody may be required due to differences in protocols and secondary/substrate sensitivity.

Immunogen

A peptide corresponding to the N-terminus of human MART1 (Melanoma antigen recognized by T-cells-1) was used as the immunogen for the recombinant MART1 antibody.

Storage

Store the recombinant MART1 antibody at -20oC.