

## MART-1 Antibody [clone M2-7C10] (V2116)

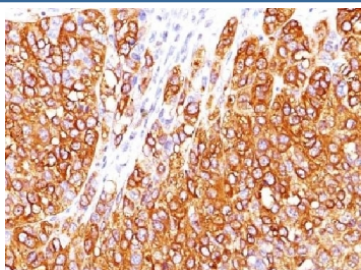
Catalog No.	Formulation	Size
V2116-100UG	0.2 mg/ml in 1X PBS with 0.1 mg/ml BSA (US sourced) and 0.05% sodium azide	100 ug
V2116-20UG	0.2 mg/ml in 1X PBS with 0.1 mg/ml BSA (US sourced) and 0.05% sodium azide	20 ug
V2116SAF-100UG	1 mg/ml in 1X PBS; BSA free, sodium azide free	100 ug
V2116IHC-7ML	Prediluted in 1X PBS with 0.1 mg/ml BSA (US sourced) and 0.05% sodium azide; *For IHC use only*	7 ml



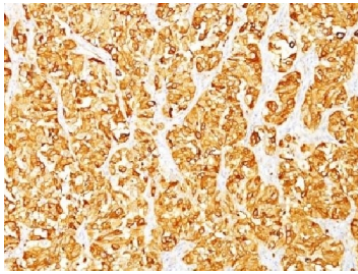
Citations (7)

[Bulk quote request](#)

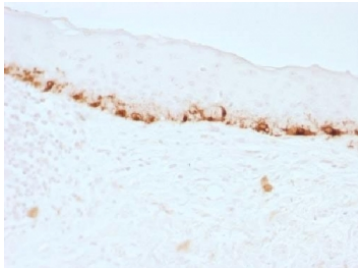
Availability	1-3 business days
Species Reactivity	Human
Format	Purified
Clonality	Monoclonal (mouse origin)
Isotype	Mouse IgG2b, lambda
Clone Name	M2-7C10
Purity	Protein G affinity chromatography
Buffer	1X PBS, pH 7.4
Gene ID	2315
Localization	Cytoplasmic
Applications	Western Blot : 2-4ug/ml Immunohistochemistry (FFPE) : 1-2ug/ml for 30 min at RT Prediluted IHC Only Format : incubate for 30 min at RT (1)
Limitations	This <b>MART-1 antibody</b> is available for research use only.



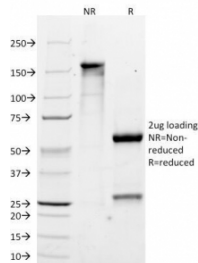
IHC testing of FFPE human melanoma stained with MART-1 antibody (clone M2-7C10). Note cytoplasmic staining of cells. HIER: boil tissue sections in pH 9 10mM Tris with 1mM EDTA for 10-20 min.



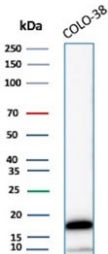
IHC testing of FFPE human melanoma stained with MART-1 antibody (clone M2-7C10). Note cytoplasmic staining of cells. HIER: boil tissue sections in pH 9 10mM Tris with 1mM EDTA for 10-20 min.



IHC testing of FFPE human skin stained with MART-1 antibody (clone M2-7C10). Note cytoplasmic staining of cells. HIER: boil tissue sections in pH 9 10mM Tris with 1mM EDTA for 10-20 min.



SDS-PAGE Analysis of Purified, BSA-Free MART-1 Antibody (clone M2-7C10). Confirmation of Integrity and Purity of the Antibody.



Western blot testing of human COLO-38 cell lysate with MART-1 antibody (clone M2-7C10). Expected molecular weight ~20 kDa.

## Description

This antibody recognizes a protein doublet of 20-22kDa, identified as MART-1 (Melanoma Antigen Recognized by T cells 1) or Melan-A. MART-1 is a melanocyte differentiation antigen recognized by autologous cytotoxic T lymphocytes. There are seven other melanoma associated antigens recognized by autologous cytotoxic T cells: MAGE-1, MAGE-3, tyrosinase, gp100, gp75, BAGE-1, and GAGE-1. Subcellular fractionation shows that MART-1 is present in melanosomes and endoplasmic reticulum. This MART-1 antibody labels melanomas and other tumors showing melanocytic differentiation. It is also a useful positive-marker for angiomyolipomas. The antibody does not stain tumor cells of epithelial, lymphoid, glial, or mesenchymal origin.

## Application Notes

The concentration stated for each application is a general starting point. Variations in protocols, secondaries and substrates may require the MART-1 antibody to be titrated up or down for optimal performance.

1. The prediluted format is supplied in a dropper bottle and is optimized for use in IHC. After epitope retrieval step (if required), drip mAb solution onto the tissue section and incubate at RT for 30 min.

## Immunogen

Recombinant human MART-1 protein was used as the immunogen for this antibody.

## Storage

Store the MART-1 antibody at 2-8oC (with azide) or aliquot and store at -20oC or colder (without azide).

## Alternate Names

Antigen LB39-AA, Antigen SK29-AA, Melanoma antigen recognized by T-cells 1, MLAN-A, MLANA, MART-1 antibody, Melan-A antibody

## References (2)