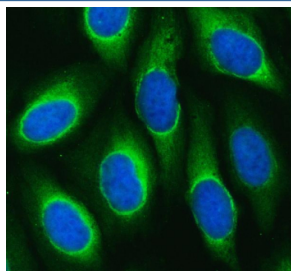


## MARS1 Antibody / Methionyl-tRNA synthetase / MetRS (RQ7269)

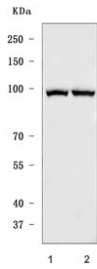
Catalog No.	Formulation	Size
RQ7269	0.5mg/ml if reconstituted with 0.2ml sterile DI water	100 ug

**Bulk quote request**

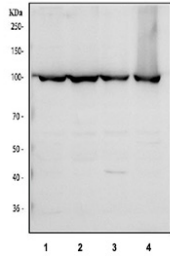
<b>Availability</b>	1-3 business days
<b>Species Reactivity</b>	Human
<b>Format</b>	Antigen affinity purified
<b>Clonality</b>	Polyclonal (rabbit origin)
<b>Isotype</b>	Rabbit IgG
<b>Purity</b>	Antigen affinity purified
<b>Buffer</b>	Lyophilized from 1X PBS with 2% Trehalose
<b>UniProt</b>	P56192
<b>Localization</b>	Cytoplasm, nucleolus
<b>Applications</b>	Western Blot : 0.5-1ug/ml Flow Cytometry : 1-3ug/million cells Direct ELISA : 0.1-0.5ug/ml Immunofluorescence : 5ug/ml Immunohistochemistry (FFPE) : 2-5ug/ml
<b>Limitations</b>	This MARS1 antibody is available for research use only.



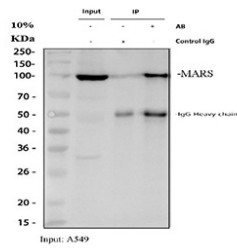
Immunofluorescent staining of FFPE human U-2 OS cells with MARS1 antibody (green) and DAPI nuclear stain (blue). HIER: steam section in pH6 citrate buffer for 20 min.



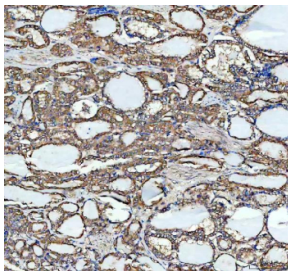
Western blot testing of human 1) HeLa and 2) HepG2 cell lysate with MARS1 antibody. Predicted molecular weight ~101 kDa.



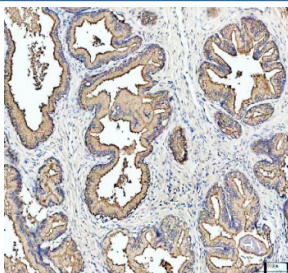
Western blot testing of human 1) HeLa, 2) HepG2, 3) A549 and 4) K562 cell lysate with MARS1 antibody. Predicted molecular weight ~101 kDa.



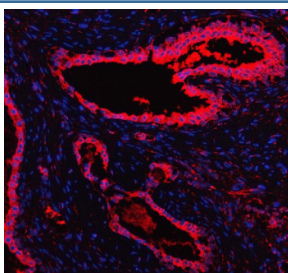
Immunoprecipitation of MARS1 protein from 500ug of human A549 whole cell lysate with 2ug of MARS1 antibody.



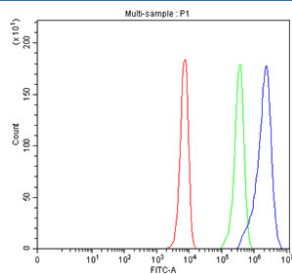
IHC staining of FFPE human thyroid cancer tissue with MARS1 antibody, HRP-labeled secondary and DAB substrate. HIER: boil tissue sections in pH8 EDTA for 20 min and allow to cool before testing.



IHC staining of FFPE human prostate cancer tissue with MARS1 antibody, HRP-labeled secondary and DAB substrate. HIER: boil tissue sections in pH8 EDTA for 20 min and allow to cool before testing.



Immunofluorescent staining of FFPE human prostate cancer tissue with MARS1 antibody (red) and DAPI nuclear stain (blue). HIER: steam section in pH8 EDTA buffer for 20 min.



Flow cytometry testing of fixed and permeabilized human K562 cells with MARS1 antibody at 1ug/million cells (blocked with goat sera); Red=cells alone, Green=isotype control, Blue= MARS1 antibody.