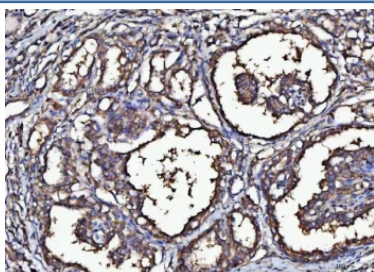


## MARK3 Antibody / MAP/microtubule affinity-regulating kinase 3 (RQ8320)

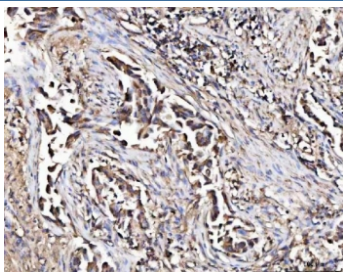
Catalog No.	Formulation	Size
RQ8320	0.5mg/ml if reconstituted with 0.2ml sterile DI water	100 ug

**Bulk quote request**

<b>Availability</b>	1-3 business days
<b>Species Reactivity</b>	Human, Mouse, Rat
<b>Format</b>	Antigen affinity purified
<b>Clonality</b>	Polyclonal (rabbit origin)
<b>Isotype</b>	Rabbit IgG
<b>Purity</b>	Antigen affinity purified
<b>Buffer</b>	Lyophilized from 1X PBS with 2% Trehalose
<b>UniProt</b>	P27448
<b>Localization</b>	Cytoplasm, cell membrane
<b>Applications</b>	Western Blot : 0.5-1ug/ml Immunohistochemistry (FFPE) : 2-5ug/ml Flow Cytometry : 1-3ug/million cells Direct ELISA : 0.1-0.5ug/ml
<b>Limitations</b>	This MARK3 antibody is available for research use only.



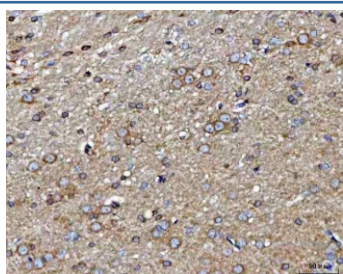
IHC staining of FFPE human thyroid cancer tissue with MARK3 antibody. HIER: boil tissue sections in pH8 EDTA for 20 min and allow to cool before testing.



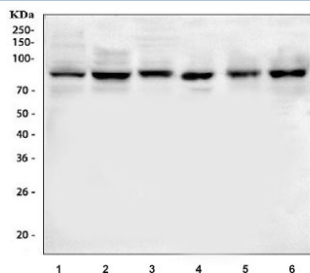
IHC staining of FFPE human lung cancer tissue with MARK3 antibody. HIER: boil tissue sections in pH8 EDTA for 20 min and allow to cool before testing.



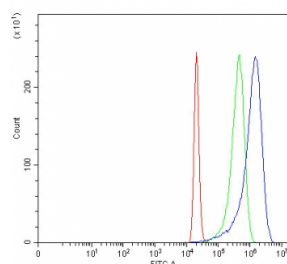
IHC staining of FFPE mouse brain tissue with MARK3 antibody. HIER: boil tissue sections in pH8 EDTA for 20 min and allow to cool before testing.



IHC staining of FFPE rat brain tissue with MARK3 antibody. HIER: boil tissue sections in pH8 EDTA for 20 min and allow to cool before testing.



Western blot testing of 1) human HeLa, 2) human K562, 3) rat NRK, 4) mouse EL-4, 5) mouse 4T1 and 6) mouse J774A.1 cell lysate with MARK3 antibody. Predicted molecular weight: 74-85 kDa (multiple isoforms).



Flow cytometry testing of fixed and permeabilized human 293T cells with MARK3 antibody at 1ug/million cells (blocked with goat sera); Red=cells alone, Green=isotype control, Blue= MARK3 antibody.

## Description

MAP/microtubule affinity-regulating kinase 3 is an enzyme that in humans is encoded by the MARK3 gene. The protein encoded by this gene is activated by phosphorylation and in turn is involved in the phosphorylation of tau proteins MAP2 and MAP4. Several transcript variants encoding different isoforms have been found for this gene.

## Application Notes

Optimal dilution of the MARK3 antibody should be determined by the researcher.

## Immunogen

An E.coli-derived human recombinant protein (H311-D648) was used as the immunogen for the MARK3 antibody.

## **Storage**

After reconstitution, the MARK3 antibody can be stored for up to one month at 4oC. For long-term, aliquot and store at -20oC. Avoid repeated freezing and thawing.