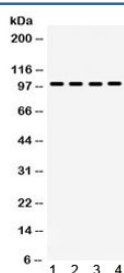


MAPK6 Antibody (R32252)

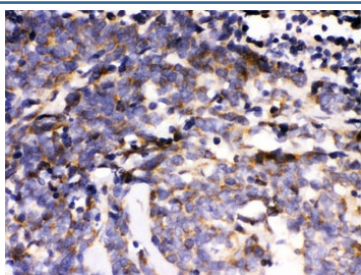
Catalog No.	Formulation	Size
R32252	0.5mg/ml if reconstituted with 0.2ml sterile DI water	100 ug

Bulk quote request

Availability	1-3 business days
Species Reactivity	Human, Mouse, Rat
Format	Antigen affinity purified
Clonality	Polyclonal (rabbit origin)
Isotype	Rabbit IgG
Purity	Antigen affinity
Buffer	Lyophilized from 1X PBS with 2.5% BSA and 0.025% sodium azide
UniProt	Q16659
Localization	Cytoplasmic
Applications	Western Blot : 0.1-0.5ug/ml IHC (FFPE) : 0.5-1ug/ml
Limitations	This MAPK6 antibody is available for research use only.



Western blot testing of 1) rat brain, 2) rat skeletal muscle, 3) human PANC and 4) mouse NIH3T3 lysate with MAPK6 antibody. Predicted molecular weight ~83 kDa but routinely observed at ~97 kDa.



IHC testing of FFPE human lung cancer with MAPK6 antibody. HIER: Boil the paraffin sections in pH 6, 10mM citrate buffer for 20 minutes and allow to cool prior to staining.

Description

Mitogen-activated protein kinase 6, or p97 MAPK, is an enzyme that in humans is encoded by the MAPK6 gene. It is mapped to 15q21. The protein encoded by this gene is a member of the Ser/Thr protein kinase family, and is most closely related to mitogen-activated protein kinases (MAP kinases). MAP kinases also known as extracellular signal-regulated kinases (ERKs), are activated through protein phosphorylation cascades and act as integration points for multiple biochemical signals. This kinase is localized in the nucleus, and has been reported to be activated in fibroblasts upon treatment with serum or phorbol esters.

Application Notes

Optimal dilution of the MAPK6 antibody should be determined by the researcher.

Immunogen

Amino acids 520-721 of human MAPK6 were used as the immunogen for the MAPK6 antibody.

Storage

After reconstitution, the MAPK6 antibody can be stored for up to one month at 4°C. For long-term, aliquot and store at -20°C. Avoid repeated freezing and thawing.