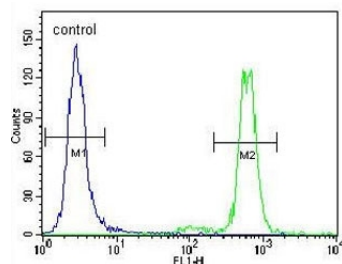


MAPK3 Antibody / ERK1 (F54935)

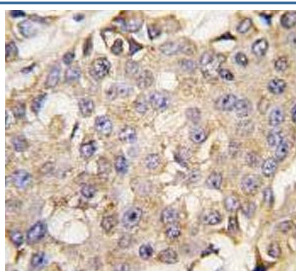
| Catalog No. | Formulation | Size |
|---------------|--|---------|
| F54935-0.4ML | In 1X PBS, pH 7.4, with 0.09% sodium azide | 0.4 ml |
| F54935-0.08ML | In 1X PBS, pH 7.4, with 0.09% sodium azide | 0.08 ml |

[Bulk quote request](#)

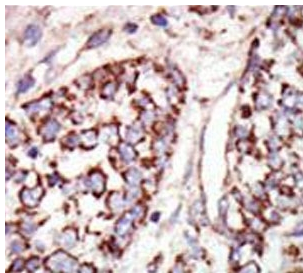
| | |
|---------------------------|--|
| Availability | 1-3 business days |
| Species Reactivity | Human, Mouse, Rat |
| Format | Purified |
| Clonality | Polyclonal (rabbit origin) |
| Isotype | Rabbit Ig |
| Purity | Purified |
| UniProt | P27361 |
| Localization | Cytoplasmic, nuclear |
| Applications | Flow Cytometry : 1:10-1:50 (1x10e6 cells) Immunohistochemistry (FFPE) : 1:50-1:100 Western Blot : 1:500-1:1000 |
| Limitations | This MAPK3 antibody is available for research use only. |



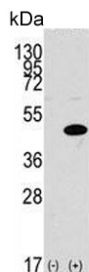
Flow cytometry testing of human HeLa cells with MAPK3 antibody; Blue=isotype control, Green= MAPK3 antibody.



IHC testing of FFPE human breast cancer tissue with MAPK3 antibody. HIER: steam section in pH6 citrate buffer for 20 min and allow to cool prior to staining.



IHC testing of FFPE human cancer tissue with MAPK3 antibody. HIER: steam section in pH6 citrate buffer for 20 min and allow to cool prior to staining.



Western blot testing of 1) non-transfected and 2) transfected 293 cell lysate with MAPK3 antibody.

Description

ERK1, a member of the MAP kinase subfamily of Ser/Thr protein kinases, is involved in both the initiation and regulation of meiosis, mitosis, and postmitotic functions in differentiated cells by phosphorylating a number of transcription factors such as ELK-1. It phosphorylates EIF4EBP1 and is required for initiation of translation. The protein also phosphorylates microtubule-associated protein-2 (MAP2). ERK1 is activated and tyrosine phosphorylated in response to insulin and NGF.

Application Notes

The stated application concentrations are suggested starting points. Titration of the MAPK3 antibody may be required due to differences in protocols and secondary/substrate sensitivity.

Immunogen

A portion of amino acids 1-30 from the human protein was used as the immunogen for the MAPK3 antibody.

Storage

Aliquot the MAPK3 antibody and store frozen at -20°C or colder. Avoid repeated freeze-thaw cycles.