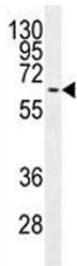


## MAPK15 Antibody [clone 168CT10.6.6] (F40231)

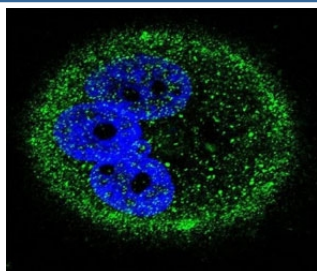
Catalog No.	Formulation	Size
F40231-0.4ML	In 1X PBS, pH 7.4, with 0.09% sodium azide	0.4 ml
F40231-0.08ML	In 1X PBS, pH 7.4, with 0.09% sodium azide	0.08 ml

**Bulk quote request**

<b>Availability</b>	1-3 business days
<b>Species Reactivity</b>	Human
<b>Format</b>	Purified
<b>Clonality</b>	Monoclonal (mouse origin)
<b>Isotype</b>	Mouse IgG1, k
<b>Clone Name</b>	168CT10.6.6
<b>Purity</b>	Purified
<b>UniProt</b>	Q8TD08
<b>Applications</b>	Western Blot : 1:100-1:500 Immunofluorescence : 1:10-1:50
<b>Limitations</b>	This MAPK15 antibody is available for research use only.



MAPK15 antibody western blot analysis in MCF-7 lysate.



Confocal immunofluorescent analysis of MAPK15 antibody with MCF-7 cells followed by Alexa Fluor 488-conjugated goat anti-mouse IgG (green). DAPI was used as a nuclear counterstain (blue).

## Description

In vitro, phosphorylates MBP.

## Application Notes

Titration of the MAPK15 antibody may be required due to differences in protocols and secondary/substrate sensitivity.

## Immunogen

This MAPK15 antibody was produced from a mouse immunized with MAPK15 recombinant protein.

## Storage

Aliquot the MAPK15 antibody and store frozen at -20oC or colder. Avoid repeated freeze-thaw cycles.