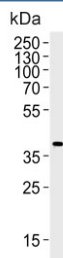


Mapk11 Antibody (F54679)

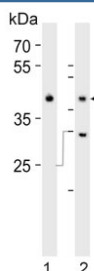
Catalog No.	Formulation	Size
F54679-0.4ML	In 1X PBS, pH 7.4, with 0.09% sodium azide	0.4 ml
F54679-0.08ML	In 1X PBS, pH 7.4, with 0.09% sodium azide	0.08 ml

[Bulk quote request](#)

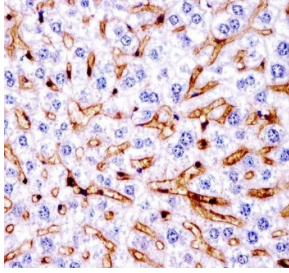
Availability	1-3 business days
Species Reactivity	Mouse
Format	Purified
Clonality	Polyclonal (rabbit origin)
Isotype	Rabbit Ig
Purity	Antigen affinity purified
UniProt	Q9WUI1
Localization	Cytoplasmic, nuclear
Applications	Flow Cytometry : 1:25 (1x10e6 cells) Western Blot : 1:500-1:2000 Immunohistochemistry (FFPE) : 1:25
Limitations	This Mapk11 antibody is available for research use only.



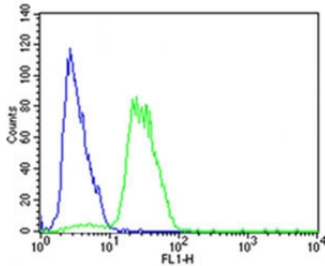
Western blot testing of mouse NIH 3T3 cell lysate with Mapk11 antibody. Predicted molecular weight ~41 kDa.



Western blot testing of mouse 1) spleen and 2) heart tissue lysate with Mapk11 antibody. Predicted molecular weight ~41 kDa.



IHC testing of FFPE mouse liver tissue with IRF7 antibody. HIER: steam section in pH6 citrate buffer for 20 min and allow to cool prior to staining.



Flow cytometry testing of human SH-SY5Y cells with Mapk11 antibody; Blue=isotype control, Green= Mapk11 antibody.

Description

Kinase involved in a signal transduction pathway that is activated by changes in the osmolarity of the extracellular environment, by cytokines, or by environmental stress. Phosphorylates preferentially transcription factor ATF2 (By similarity).

Application Notes

The stated application concentrations are suggested starting points. Titration of the Mapk11 antibody may be required due to differences in protocols and secondary/substrate sensitivity.

Immunogen

A portion of amino acids 1-30 from the mouse protein was used as the immunogen for the Mapk11 antibody.

Storage

Aliquot the Mapk11 antibody and store frozen at -20oC or colder. Avoid repeated freeze-thaw cycles.