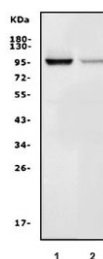


## Map4k1 Antibody (RQ6105)

| Catalog No. | Formulation   | Size   |
|-------------|---|--------|
| RQ6105      | 0.5mg/ml if reconstituted with 0.2ml sterile DI water | 100 ug |

**Bulk quote request**

|                           |   |
|---------------------------|---|
| <b>Availability</b>       | 1-3 business days   |
| <b>Species Reactivity</b> | Rat   |
| <b>Format</b>             | Antigen affinity purified   |
| <b>Clonality</b>          | Polyclonal (rabbit origin)  |
| <b>Isotype</b>            | Rabbit IgG  |
| <b>Purity</b>             | Affinity purified   |
| <b>Buffer</b>             | Lyophilized from 1X PBS with 2% Trehalose and 0.025% sodium azide |
| <b>UniProt</b>            | D3Z8I4  |
| <b>Applications</b>       | Western Blot : 1-2ug/ml   |
| <b>Limitations</b>        | This Map4k1 antibody is available for research use only.          |



Western blot testing of rat 1) thymus and 2) NRK cell lysate with Map4k1 lysate. Predicted molecular weight ~97 kDa.

## Description

Mitogen-activated protein kinase kinase kinase 1 is a protein kinase that in humans is encoded by the MAP4K1 gene. It is also known as HPK1 (Hematopoietic Progenitor Kinase 1). The protein has been shown to play a role in JNK activation.

## Application Notes

Optimal dilution of the Map4k1 antibody should be determined by the researcher.

## Immunogen

Amino acids DIFNKDPREHYDLLQRL from the rat protein were used as the immunogen for the Map4k1 antibody.

## Storage

After reconstitution, the Map4k1 antibody can be stored for up to one month at 4oC. For long-term, aliquot and store at -20oC. Avoid repeated freezing and thawing.