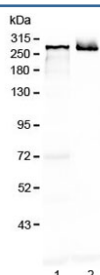


## MAP2 Antibody (RQ4187)

Catalog No.	Formulation	Size
RQ4187	0.5mg/ml if reconstituted with 0.2ml sterile DI water	100 ug

**Bulk quote request**

<b>Availability</b>	1-3 business days
<b>Species Reactivity</b>	Mouse, Rat
<b>Predicted Reactivity</b>	Human
<b>Format</b>	Antigen affinity purified
<b>Clonality</b>	Polyclonal (rabbit origin)
<b>Isotype</b>	Rabbit IgG
<b>Purity</b>	Antigen affinity purified
<b>Buffer</b>	Lyophilized from 1X PBS with 2% Trehalose and 0.025% sodium azide
<b>UniProt</b>	P11137
<b>Applications</b>	Western Blot : 0.5-1ug/ml Direct ELISA : 0.1-0.5ug/ml
<b>Limitations</b>	This MAP2 antibody is available for research use only.



Western blot testing of 1) rat brain and 2) mouse brain lysate with MAP2 antibody at 0.5ug/ml. Predicted molecular weight ~199 kDa, routinely observed at ~280 kDa.

## Description

Microtubule-associated protein 2 is a protein that in humans is encoded by the MAP2 gene. This gene encodes a protein that belongs to the microtubule-associated protein family. The proteins of this family are thought to be involved in microtubule assembly, which is an essential step in neurogenesis. The products of similar genes in rat and mouse are neuron-specific cytoskeletal proteins that are enriched in dendrites, implicating a role in determining and stabilizing dendritic shape during neuron development. A number of alternatively spliced variants encoding distinct isoforms have been described.

## Application Notes

Optimal dilution of the MAP2 antibody should be determined by the researcher.

## Immunogen

A recombinant human protein corresponding to amino acids Q64-L133 was used as the immunogen for the MAP2 antibody.

## Storage

After reconstitution, the MAP2 antibody can be stored for up to one month at 4°C. For long-term, aliquot and store at -20°C. Avoid repeated freezing and thawing.