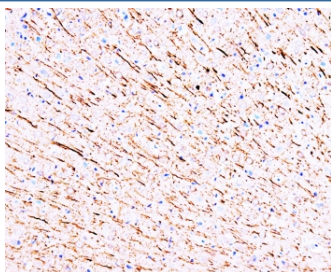


MAP1 Antibody [clone HM-1] (R30049)

Catalog No.	Formulation	Size
R30049	0.5mg/ml with 1% BSA and 0.01% sodium azide if reconstituted with 0.2ml sterile 1X PBS	100 ug

[Bulk quote request](#)

Availability	1-3 business days
Species Reactivity	Mouse, Rat
Format	Ascites
Clonality	Monoclonal (mouse origin)
Isotype	Mouse IgG1
Clone Name	HM-1
Purity	Ascites
Gene ID	4130
Applications	Western Blot : 0.5-2ug/ml IHC (FFPE) : 1-2ug/ml IHC (Frozen) : 1-2ug/ml--formalin or acetone fixed tissues
Limitations	This MAP1 antibody is available for research use only.



IHC-P: MAP1 antibody testing of rat brain tissue. HIER: steamed with pH6 citrate buffer, HRP-staining.

Description

Microtubules are the ubiquitous cytoskeletal structural components that are involved in intracellular transport. They are composed of tubulin and microtubule-associated proteins (MAPs). MAP1 is one of the major neuronal MAPs as well as being the largest (350KD). MAPs include MAP1A, MAP1B, and MAP2. MAP1a is a single-copy gene spanning 10.5 kb. MAP1a coding sequence is contained in five exons. MAP1B is encoded as a polypeptide that is processed to form a complex N-terminal microtubule-binding domain.

Application Notes

The stated application concentrations are suggested starting amounts. Titration of the MAP1 antibody may be required due to differences in protocols and secondary/substrate sensitivity.

Immunogen

Rat brain microtubule-associated proteins were used as the immunogen for this MAP1 antibody.

Storage

After reconstitution, the MAP1 antibody can be stored for up to one month at 4oC. For long-term, aliquot and store at -20oC. Avoid repeated freezing and thawing.