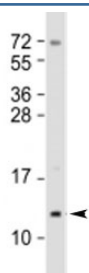


## Mammaglobin A Antibody / SCGB2A2 (F53874)

Catalog No.	Formulation	Size
F53874-0.2ML	In 1X PBS, pH 7.4, with 0.09% sodium azide	0.2 ml
F53874-0.05ML	In 1X PBS, pH 7.4, with 0.09% sodium azide	0.05 ml

[Bulk quote request](#)

<b>Availability</b>	1-3 business days
<b>Species Reactivity</b>	Human
<b>Format</b>	Antigen affinity purified
<b>Clonality</b>	Polyclonal (rabbit origin)
<b>Isotype</b>	Rabbit Ig
<b>Purity</b>	Antigen affinity
<b>UniProt</b>	Q13296
<b>Applications</b>	Western Blot : 1:1000-2000
<b>Limitations</b>	This Mammaglobin A antibody is available for research use only.



Western blot testing of human T47D cell lysate (mammary gland) with Mammaglobin A antibody at 1:2000. Expected molecular weight: 10-21 kDa depending on level of glycosylation.

### Description

Mammaglobin A, also called MGB1 and Secretoglobin family 2A member 2 (SCGB2A2) is a breast cancer marker.

### Application Notes

Titration of the Mammaglobin A antibody may be required due to differences in protocols and secondary/substrate sensitivity.

### Immunogen

A portion of amino acids 22-51 from the human protein was used as the immunogen for the Mammaglobin A antibody.

## Storage

Aliquot the Mammaglobin A antibody and store frozen at -20oC or colder. Avoid repeated freeze-thaw cycles.